

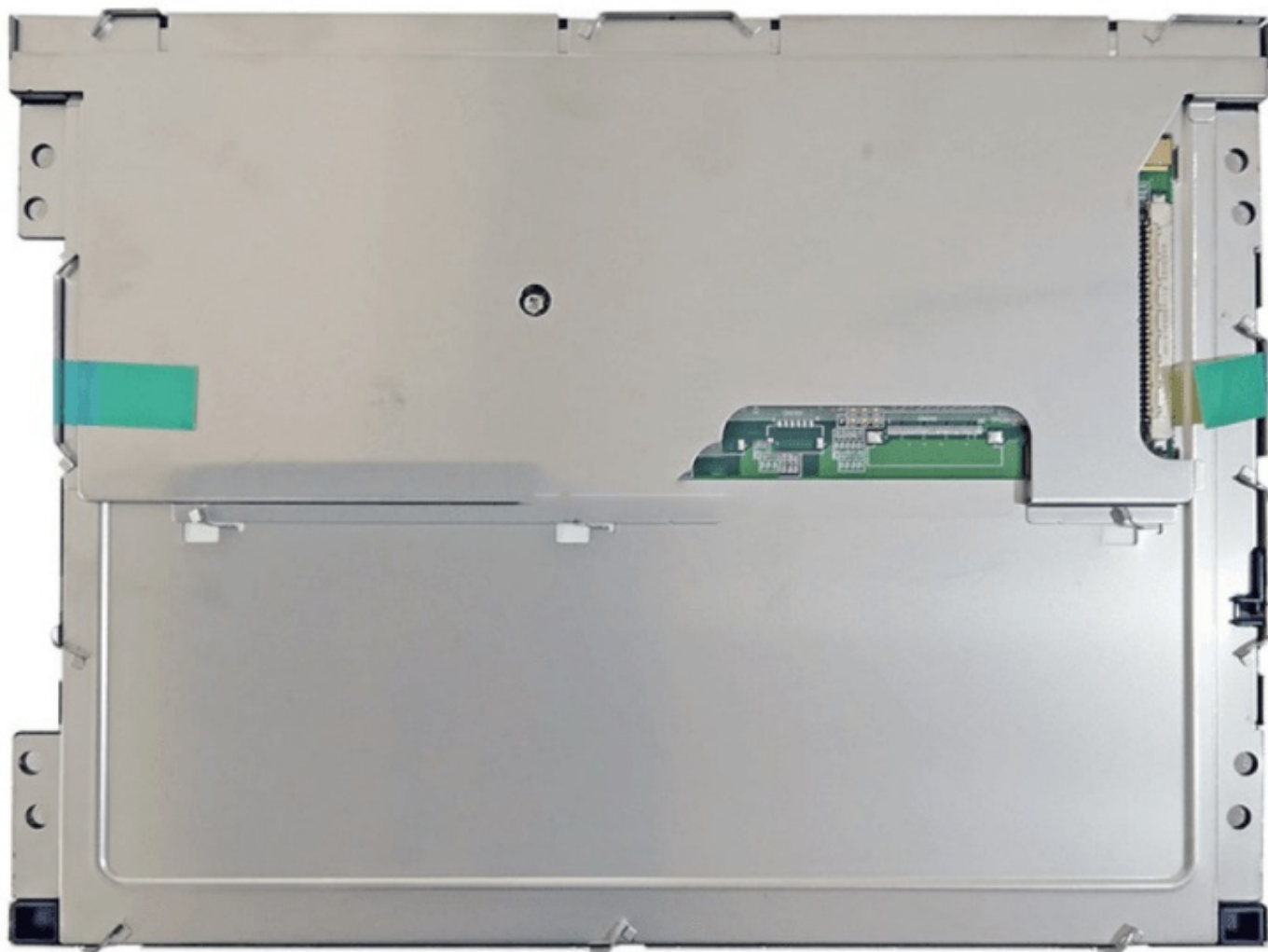
TCG084VGLAAANN-AN00-S kyocera 8.4 inch tft display

Model	TCG084VGLAAANN-AN00-S
Brand	KYOCERA
Category	Kyocera
Size	8.4"
Resolution	640*480
Brightness	450
Contrast Ratio	500:1
Viewing Angle	65/65/60/65
Lamp Type	WLED
Signal Interface	40 pins
Panel Type	a-Si TFT-LCD, LCM
Mass	1.000Kg
Frame Rate	60
Active Area	170.88x128.16
Storage Temp	30 ~ 80 °C
Operating Temp	-20 ~ 70 °C
Support Color	262K

Note:

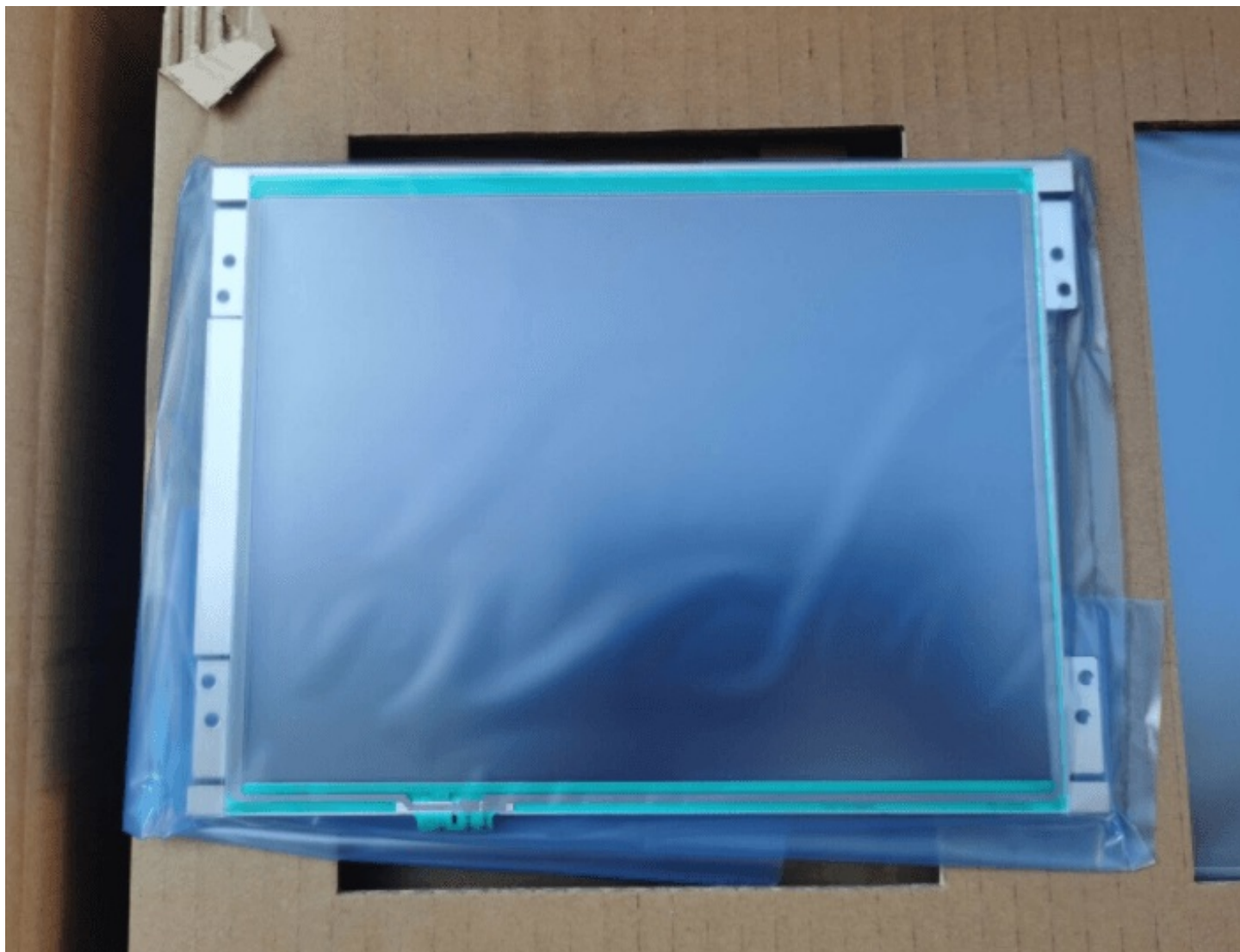
zylcdshop.com recommends that you inquire with the original factory or its agents about the latest production status and technical information about TCG084VGLAAANN-AN00-S. The product parameters displayed on zylcdshop.com are entered by zylcdshop.com engineers according to the specifications, and efforts have been made to minimize errors, but we cannot guarantee the complete correctness of the parameters. Please refer to the specification sheet!

<https://www.zylcdshop.com>



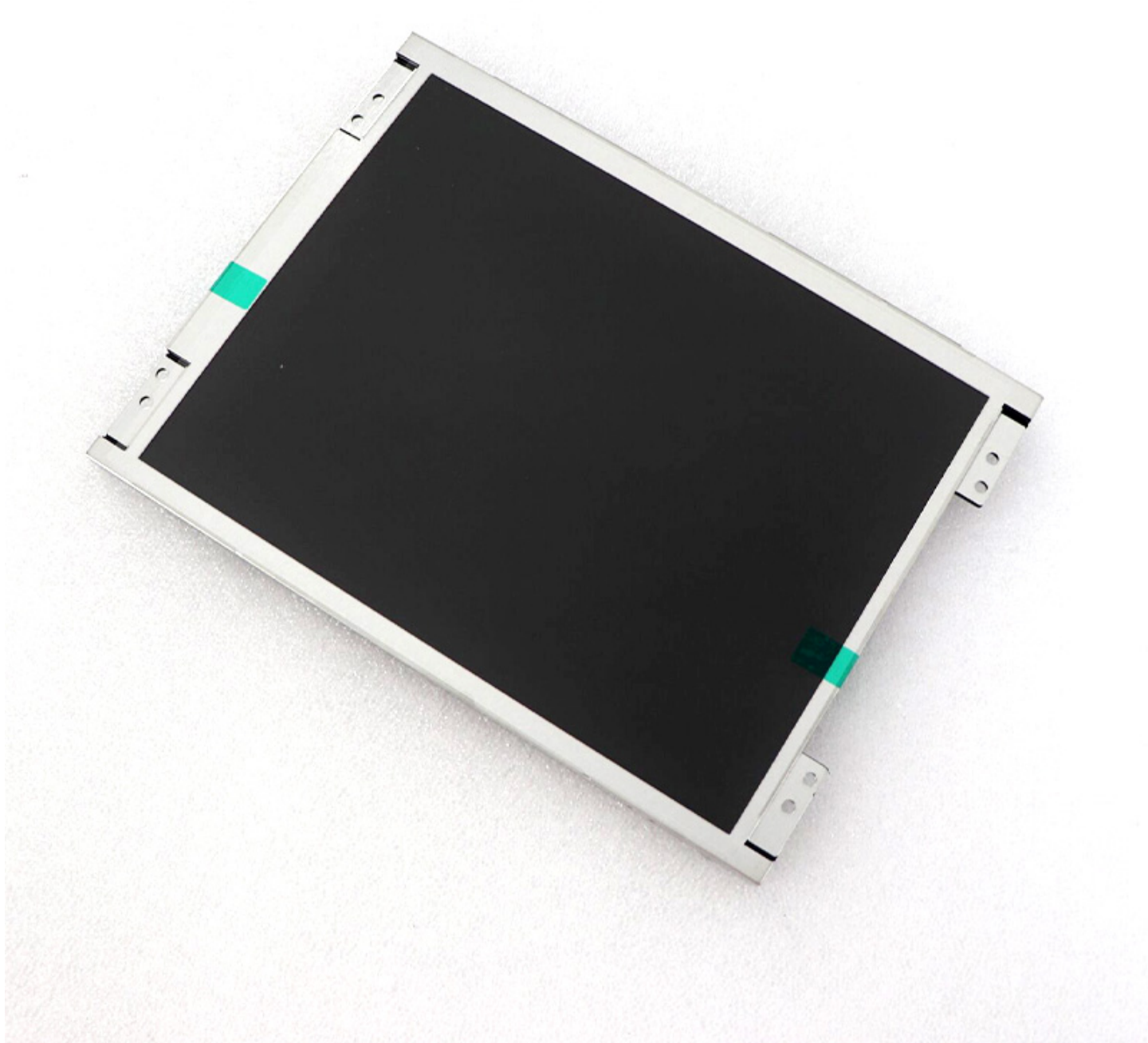
<https://www.zylcdshop.com>

<https://www.zylcdshop.com>



<https://www.zylcdshop.com>

<https://www.zylcdshop.com>



<https://www.zylcdshop.com>