

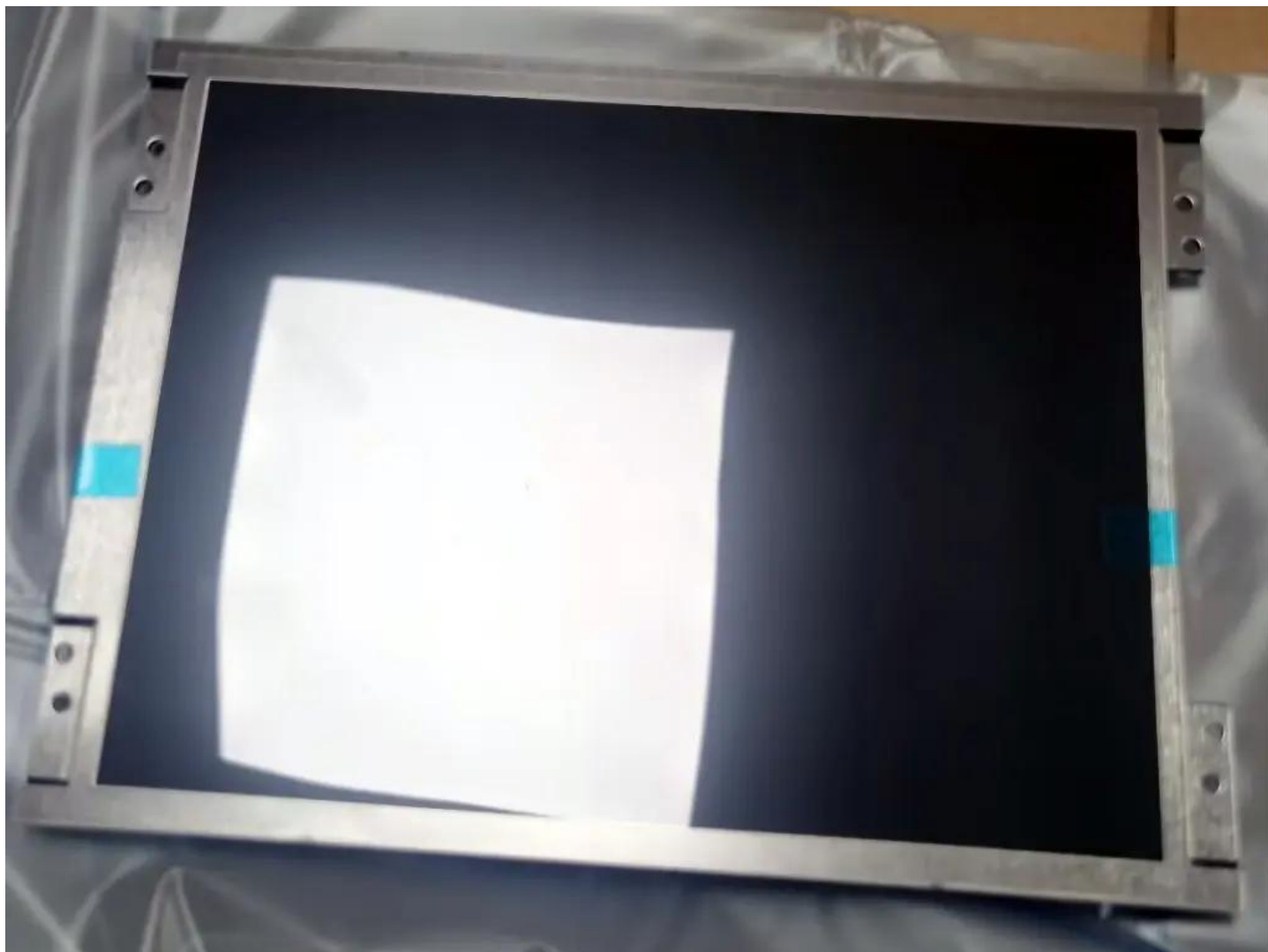
TCG084SVLBADNN-AN20 kyocera 8.4 inch tft screen

Model	TCG084SVLBADNN-AN20
Brand	KYOCERA
Category	Kyocera
Size	8.4"
Resolution	800*600
Brightness	400
Contrast Ratio	800 : 1
Viewing Angle	80/80/80/60
Lamp Type	WLED
Signal Interface	30 pins
Panel Type	a-Si TFT-LCD, LCM
Mass	1.000Kg
Frame Rate	70
Active Area	170.4x127.8
Outline	199.5x147.4x9.5
Storage Temp	-30 ~ 80 °C
Operating Temp	20 ~ 70 °C
Support Color	262K

Note:

zylcdshop.com recommends that you inquire with the original factory or its agents about the latest production status and technical information about TCG084SVLBADNN-AN20. The product parameters displayed on zylcdshop.com are entered by zylcdshop.com engineers according to the specifications, and efforts have been made to minimize errors, but we cannot guarantee the complete correctness of the parameters. Please refer to the specification sheet!

<https://www.zylcdshop.com>



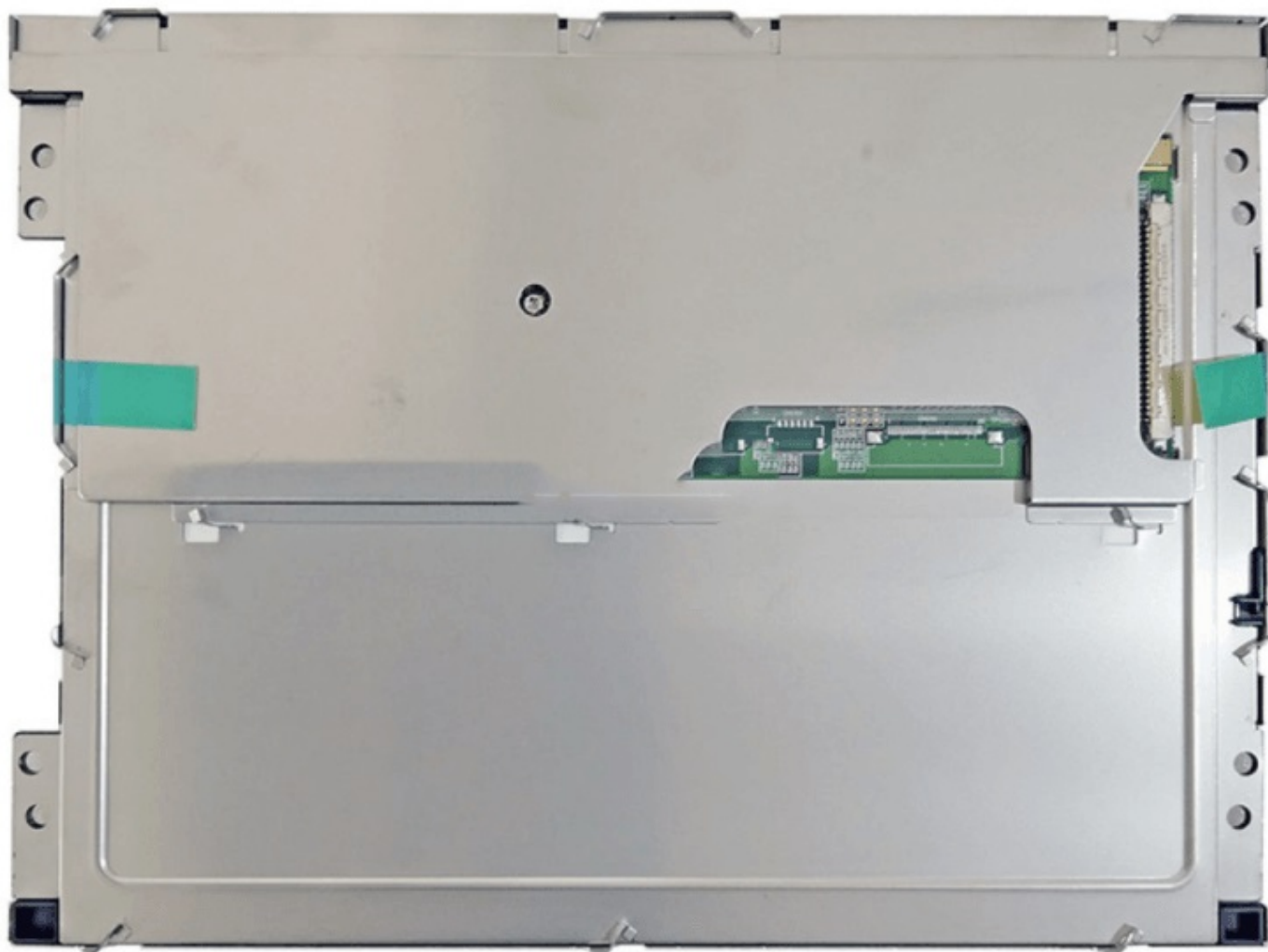
<https://www.zylcdshop.com>

<https://www.zylcdshop.com>



<https://www.zylcdshop.com>

<https://www.zylcdshop.com>



<https://www.zylcdshop.com>