

TCG075VGLDA-H50-42-07-18 7.5 inch 640*480 lcd display screens

| | |
|------------|--------------------------|
| Model | TCG075VGLDA-H50-42-07-18 |
| Brand | KYOCERA |
| Category | Kyocera |
| Size | 7.5" |
| Panel Type | a-Si TFT-LCD, LCM |
| Mass | 1.000Kg |

Note:

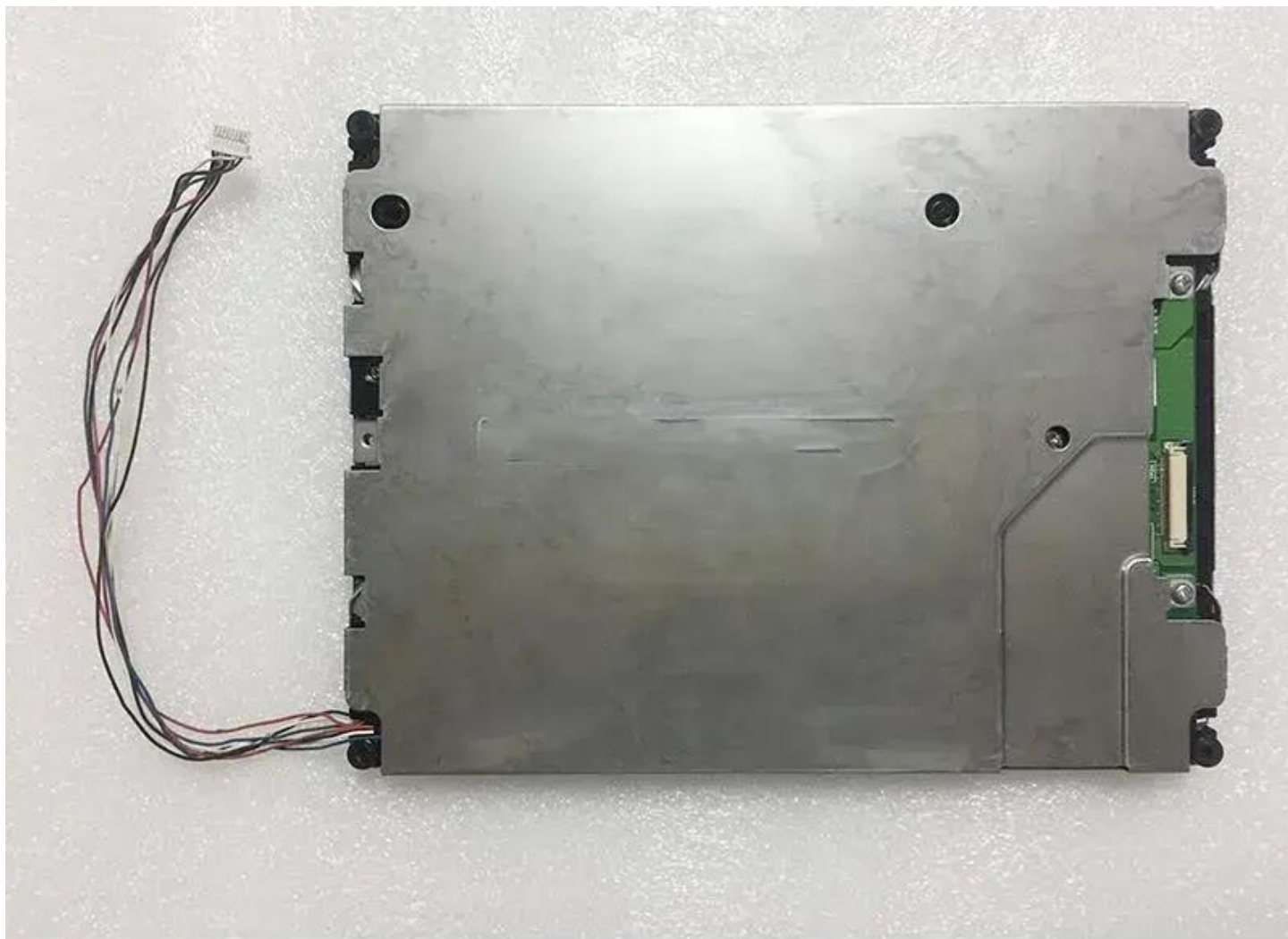
zylcdshop.com recommends that you inquire with the original factory or its agents about the latest production status and technical information about TCG075VGLDA-H50-42-07-18. The product parameters displayed on zylcdshop.com are entered by zylcdshop.com engineers according to the specifications, and efforts have been made to minimize errors, but we cannot guarantee the complete correctness of the parameters. Please refer to the specification sheet!

<https://www.zylcdshop.com>



<https://www.zylcdshop.com>

<https://www.zylcdshop.com>



<https://www.zylcdshop.com>

<https://www.zylcdshop.com>



<https://www.zylcdshop.com>