

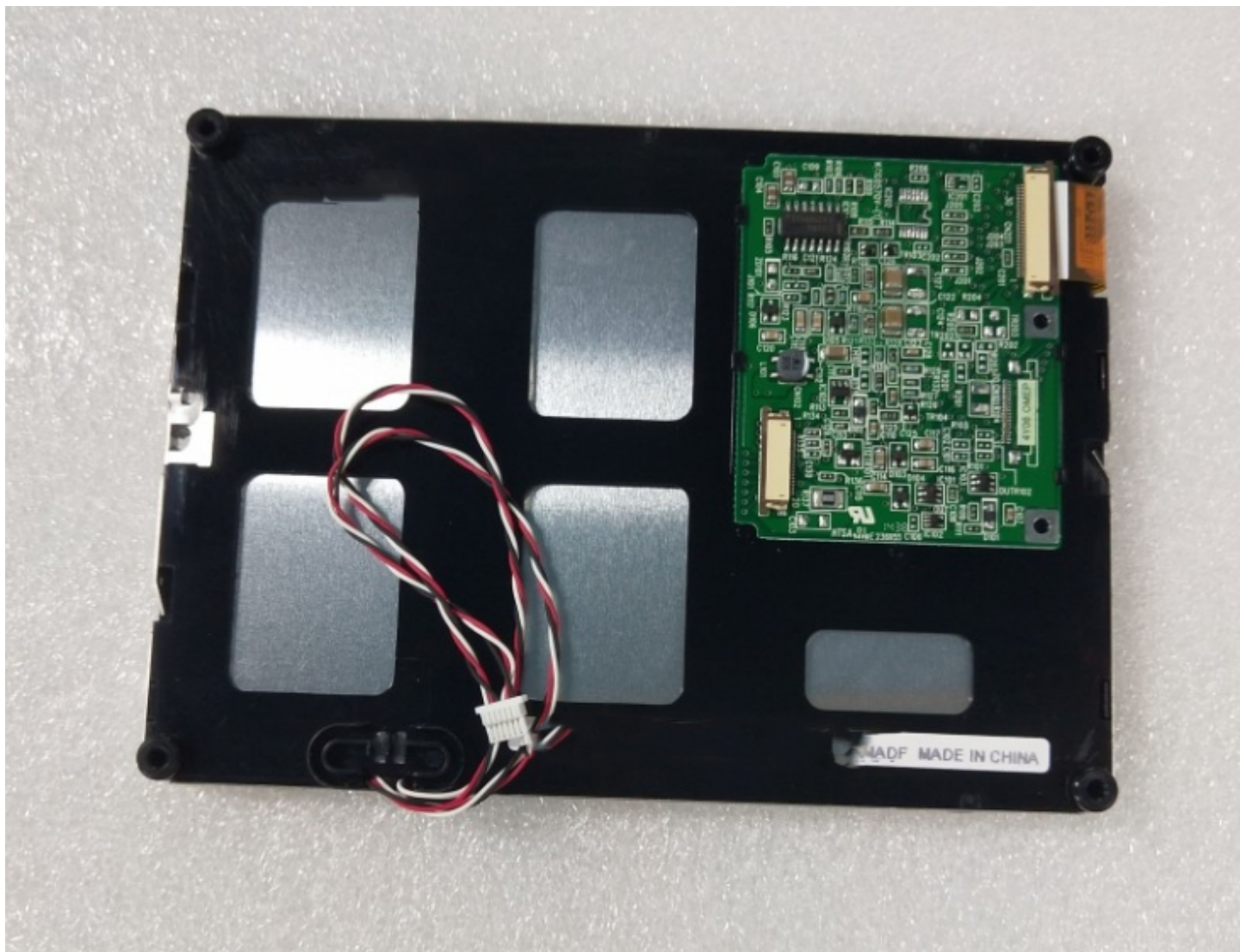
TCG057VGLDFAFA-GA00 kyocera 5.7 inch tft lcd module

Model	TCG057VGLDFAFA-GA00
Brand	KYOCERA
Category	Kyocera
Size	5.7"
Resolution	640*480
Brightness	320
Contrast Ratio	500:1
Viewing Angle	80/80/80/80
Lamp Type	WLED
Signal Interface	33 pins
Panel Type	a-Si TFT-LCD, LCM
Mass	0.500Kg
Active Area	115.2x86.4
Outline	134.5x103.4x10.15
Storage Temp	-30 ~ 80 °C
Operating Temp	-20 ~ 70 °C
Support Color	262K

Note:

zylcdshop.com recommends that you inquire with the original factory or its agents about the latest production status and technical information about TCG057VGLDFAFA-GA00. The product parameters displayed on zylcdshop.com are entered by zylcdshop.com engineers according to the specifications, and efforts have been made to minimize errors, but we cannot guarantee the complete correctness of the parameters. Please refer to the specification sheet!

<https://www.zylcdshop.com>



<https://www.zylcdshop.com>

<https://www.zylcdshop.com>



<https://www.zylcdshop.com>

<https://www.zylcdshop.com>



<https://www.zylcdshop.com>