

TCG057QVLPKANN-NN50AK Kyocera 5.7 inch display lcd

Model	TCG057QVLPKANN-NN50AK
Brand	KYOCERA
Category	Kyocera
Size	5.7"
Resolution	320*240
Viewing Angle	80/80/80/80
Lamp Type	WLED
Signal Interface	Parallel RGB (1 ch, 6-bit) Connector
Panel Type	a-Si TFT-LCD, LCM
Mass	0.500Kg
Frame Rate	60
Active Area	115.2x86.4
Support Color	262K

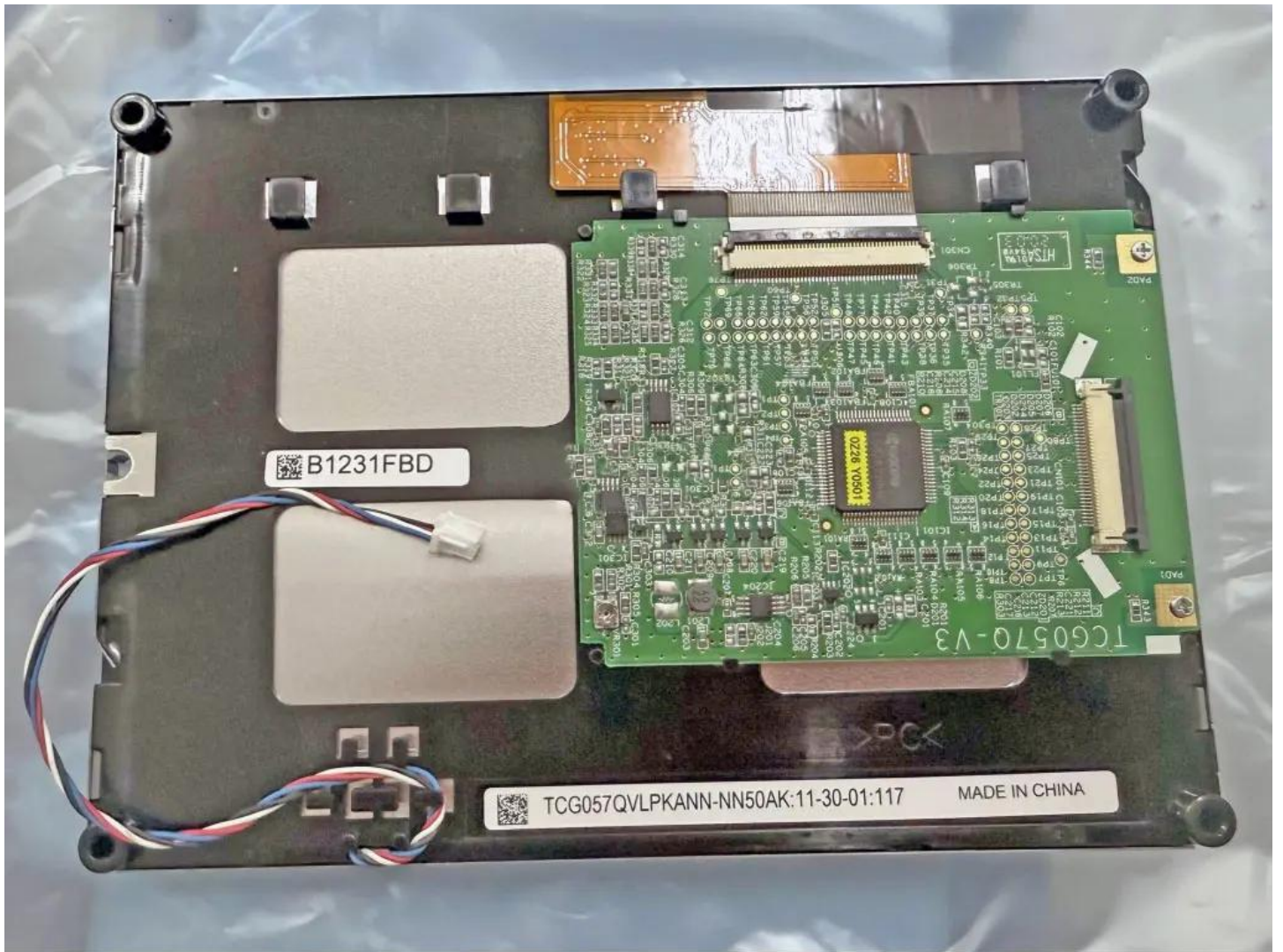
Note:

zylcdshop.com recommends that you inquire with the original factory or its agents about the latest production status and technical information about TCG057QVLPKANN-NN50AK. The product parameters displayed on zylcdshop.com are entered by zylcdshop.com engineers according to the specifications, and efforts have been made to minimize errors, but we cannot guarantee the complete correctness of the parameters. Please refer to the specification sheet!

<https://www.zylcdshop.com>



<https://www.zylcdshop.com>



<https://www.zylcdshop.com>



<https://www.zylcdshop.com>