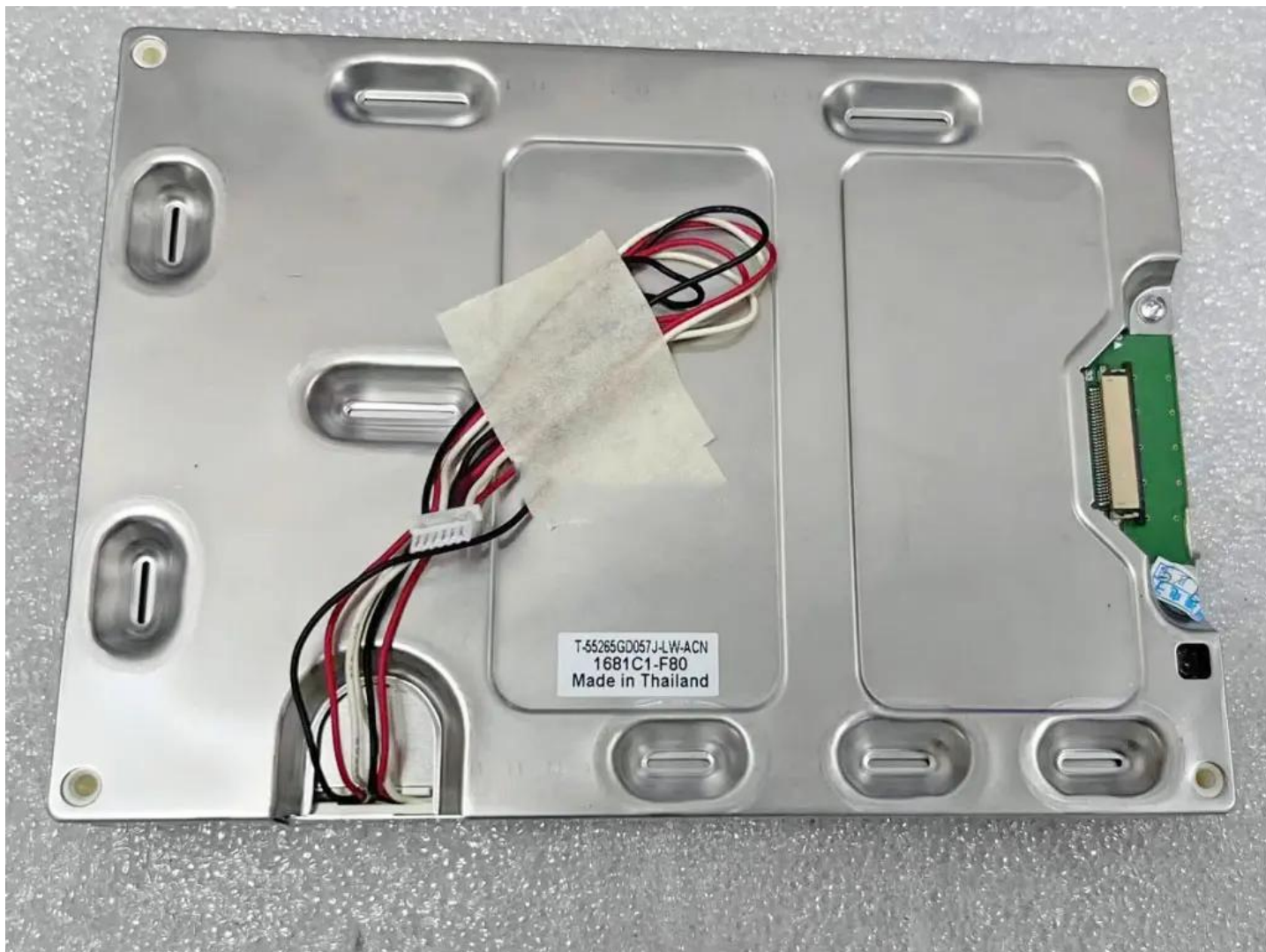


T-55265GD057J-LW-ACN N kyocera 5.7 inch lcd display panel

Model	T-55265GD057J-LW-ACN
Brand	KYOCERA
Category	Kyocera
Size	5.7"
Resolution	320*240
Brightness	400
Contrast Ratio	350 : 1
Viewing Angle	70/70/70/70
Lamp Type	WLED
Signal Interface	33 pins
Panel Type	a-Si TFT-LCD, LCM
Mass	0.500Kg
Frame Rate	60
Active Area	115.2×86.4
Outline	144 × 104.6 × 15.1
Storage Temp	-30 ~ 80 °C
Operating Temp	-20 ~ 70 °C
Support Color	262K

Note:

zylcdshop.com recommends that you inquire with the original factory or its agents about the latest production status and technical information about T-55265GD057J-LW-ACN. The product parameters displayed on zylcdshop.com are entered by zylcdshop.com engineers according to the specifications, and efforts have been made to minimize errors, but we cannot guarantee the complete correctness of the parameters. Please refer to the specification sheet!



<https://www.zylcdshop.com>



<https://www.zylcdshop.com>

<https://www.zylcdshop.com>



<https://www.zylcdshop.com>