

SX14Q004 KOE 5.7"320*240 Original lcd display panel

Model	SX14Q004
Brand	KOE
Category	KOE
Size	5.7"
Resolution	320(RGB)x240, QVGA 70PPI
Brightness	200 cd/m ² (Typ.)
Contrast Ratio	40:1 (Typ.) (TM)
Viewing Angle	45/45/35/45 (Typ.)(CR?2
Lamp Type	1 pcs CCFL , 50K hours
Signal Interface	Parallel Data (1ch, 8-bit) , 16 pins FPC
Panel Type	a-Si TFT-LCD, LCM
Mass	0.500Kg
Frame Rate	70Hz
Active Area	115.2(H)x86.4(V) mm
Outline	167(H)x109(V)x9.2(D) mm
Storage Temp	-20 ~ 70 °C
Operating Temp	0 ~ 60 °C
Support Color	Color, 46% NTSC

Note:

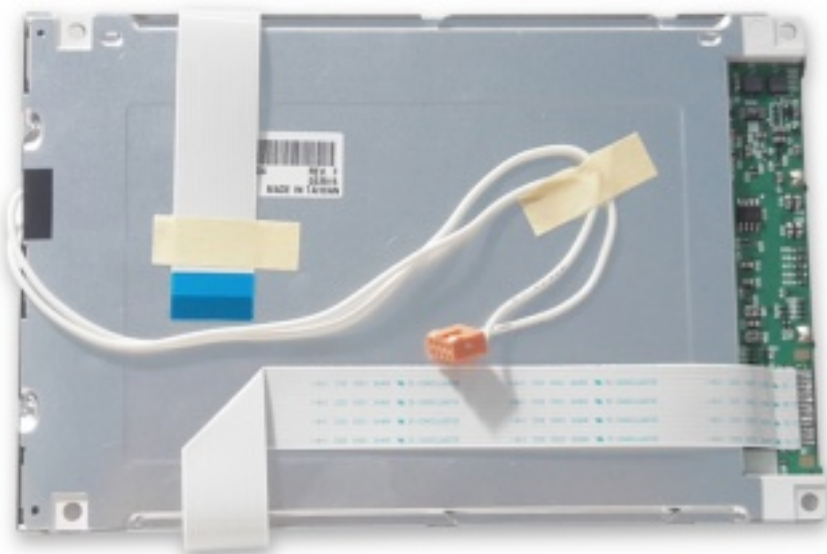
zylcdshop.com recommends that you inquire with the original factory or its agents about the latest production status and technical information about SX14Q004. The product parameters displayed on zylcdshop.com are entered by zylcdshop.com engineers according to the specifications, and efforts have been made to minimize errors, but we cannot guarantee the complete correctness of the parameters. Please refer to the specification sheet!

<https://www.zylcdshop.com>



<https://www.zylcdshop.com>

<https://www.zylcdshop.com>



<https://www.zylcdshop.com>