

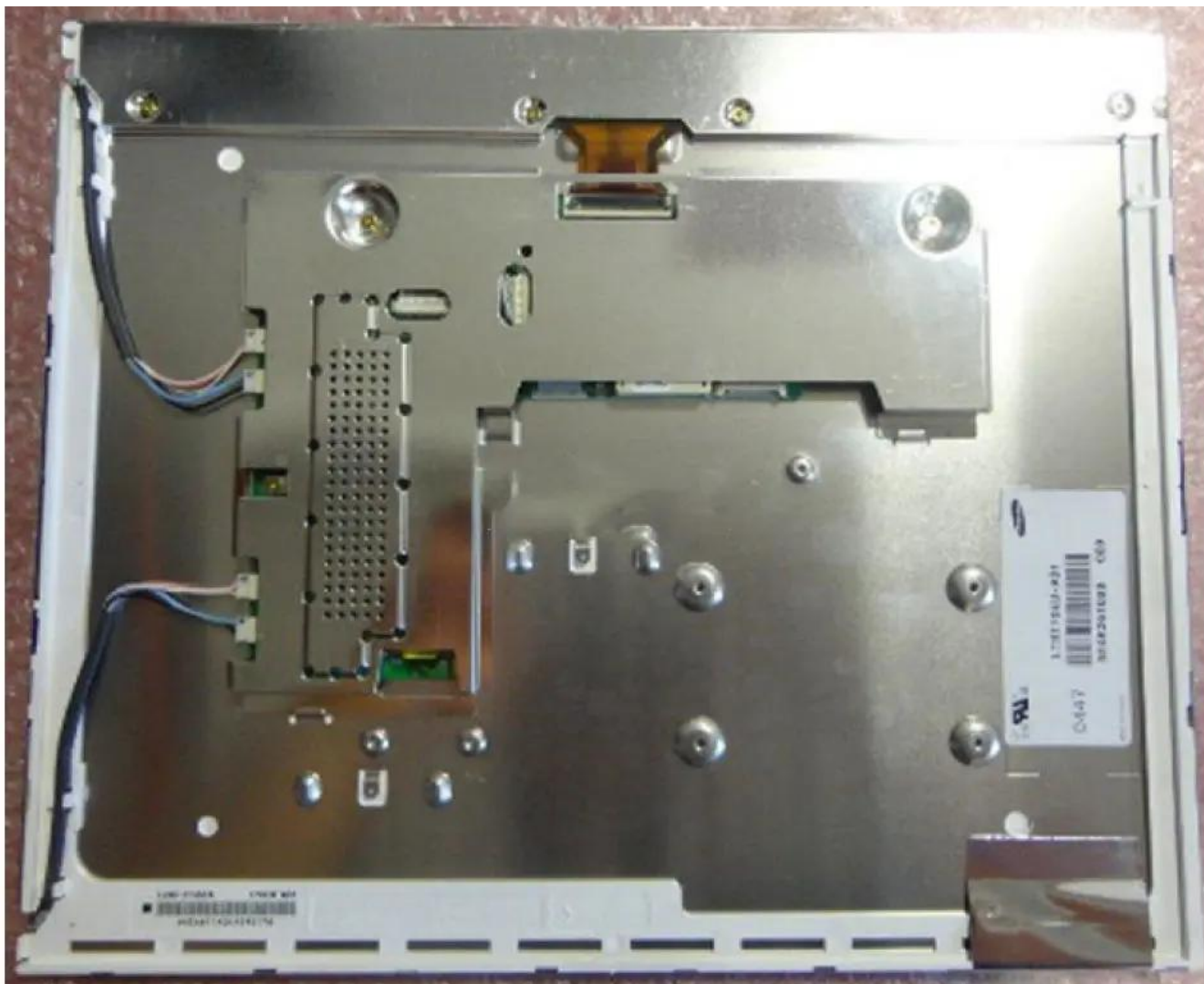
Samsung LTM170EU-A01 17" Industrial LCD Display Panel 1280×1024

Model	LTM170EU-A01
Brand	Samsung
Category	SAMSUNG
Size	17"
Resolution	1280×1024 (SXGA)
Brightness	270 cd/m ²
Contrast Ratio	600:1
Viewing Angle	60/60/50/50
Lamp Type	CCFL
Signal Interface	Analog
Panel Type	Color TFT LCD (LCM)
Mass	1.000Kg
Support Color	16.2M

Note:

zylcdshop.com recommends that you inquire with the original factory or its agents about the latest production status and technical information about LTM170EU-A01. The product parameters displayed on zylcdshop.com are entered by zylcdshop.com engineers according to the specifications, and efforts have been made to minimize errors, but we cannot guarantee the complete correctness of the parameters. Please refer to the specification sheet!

<https://www.zylcdshop.com>



<https://www.zylcdshop.com>

<https://www.zylcdshop.com>



<https://www.zylcdshop.com>