

# PM070WL3 7" TFT LCD Panel

## 800×480 Industrial Display Screen

Model	PM070WL3
Category	<a href="#">PVI</a>
Size	7"
Resolution	800*480
Brightness	400
Contrast Ratio	400 : 1
Viewing Angle	60/60/40/55
Lamp Type	WLED
Signal Interface	20 pins
Panel Type	a-Si TFT-LCD, LCM
Mass	0.500Kg
Active Area	152.x91.44
Outline	166.3x105.3x11
Storage Temp	: -40 ~ 85 °C
Operating Temp	-30 ~ 80 °C
Support Color	262K

### Note:

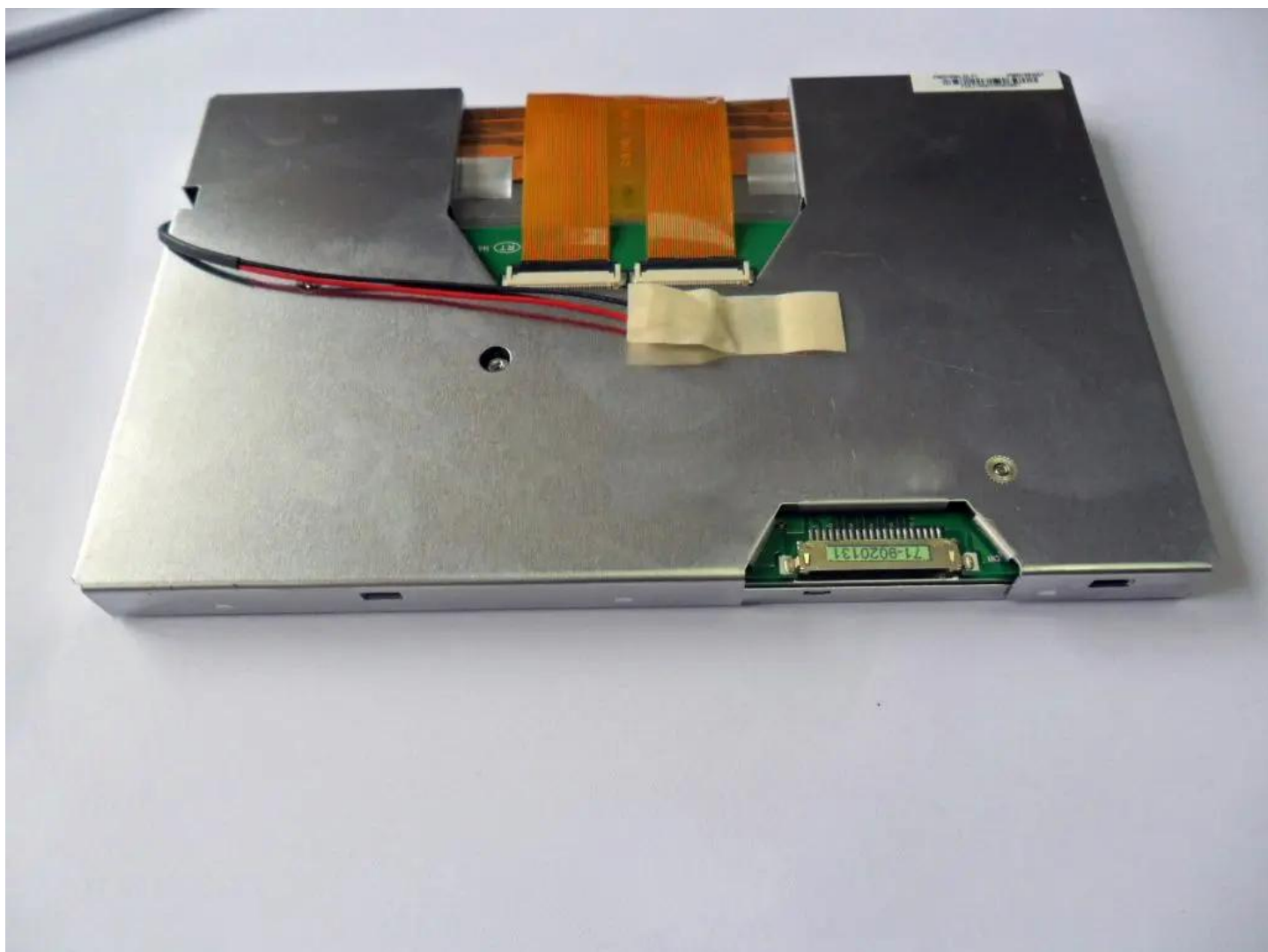
zylcdshop.com recommends that you inquire with the original factory or its agents about the latest production status and technical information about PM070WL3. The product parameters displayed on zylcdshop.com are entered by zylcdshop.com engineers according to the specifications, and efforts have been made to minimize errors, but we cannot guarantee the complete correctness of the parameters. Please refer to the specification sheet!

<https://www.zylcdshop.com>



<https://www.zylcdshop.com>

<https://www.zylcdshop.com>



<https://www.zylcdshop.com>