

PM062HT1 PVI 6.2 inch tft display

Model	PM062HT1
Category	PVI
Size	6.2"
Resolution	640*240
Brightness	280
Contrast Ratio	600:1
Viewing Angle	75/75/50/60
Lamp Type	CCFL
Signal Interface	40 pins
Panel Type	a-Si TFT-LCD, LCM
Mass	0.500Kg
Frame Rate	60
Active Area	148.8×53.76
Outline	173×70×8.9
Storage Temp	-30 ~ 80 °C
Operating Temp	-20 ~ 70 °C
Support Color	262K

Note:

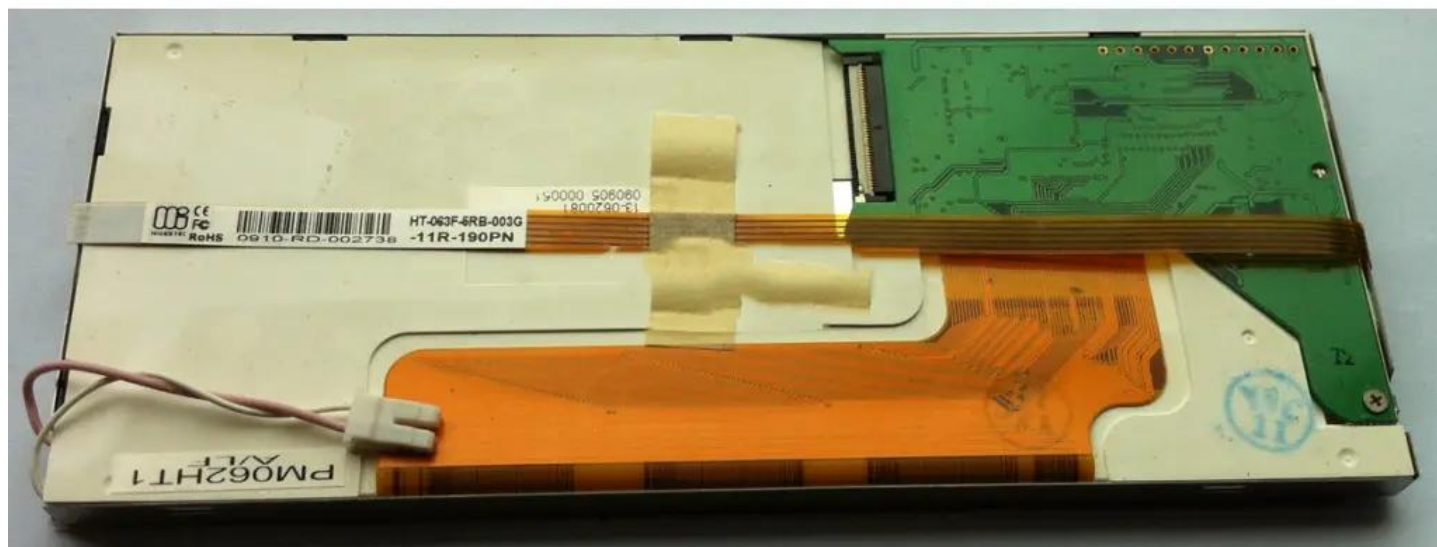
zylcdshop.com recommends that you inquire with the original factory or its agents about the latest production status and technical information about PM062HT1. The product parameters displayed on zylcdshop.com are entered by zylcdshop.com engineers according to the specifications, and efforts have been made to minimize errors, but we cannot guarantee the complete correctness of the parameters. Please refer to the specification sheet!

<https://www.zylcdshop.com>



<https://www.zylcdshop.com>

<https://www.zylcdshop.com>



<https://www.zylcdshop.com>