

NE160QDM-NZ1 BOE 16 inch 2560*1600 lcd display panel

Model	NE160QDM-NZ1
Brand	BOE
Category	BOE
Size	16"
Resolution	2560(RGB)×1600, WQXGA, 16:10
Brightness	350 cd/m ² (Typ.)
Contrast Ratio	1200:1 (Typ.) (TM)
Viewing Angle	85/85/85/85 (Typ.)(CR?10)
Lamp Type	10S6P WLED, 15K hrs, With LED Driver, DC
Signal Interface	eDP (4 Lanes), eDP1.4, HBR3 (8.1G/lane), 40 pins Connector
Panel Type	Oxide TFT-LCD, LCM
Mass	0.500Kg
Frame Rate	240Hz, FreeSync / G-Sync
Active Area	344.678(W)×215.424(H) mm
Outline	349.68(W)×232.82(H)×2.6(D) mm
Storage Temp	-20 ~ 60 °C
Operating Temp	0 ~ 50 °C
Support Color	16.7M, 100% sRGB

Note:

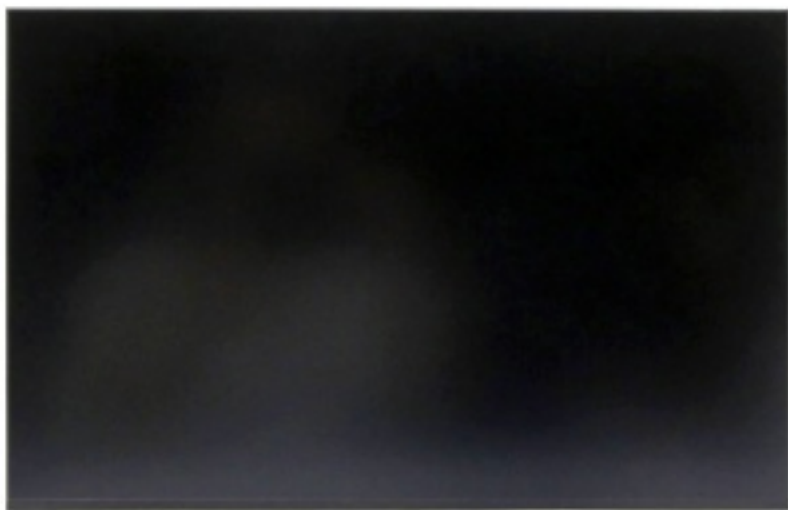
zylcdshop.com recommends that you inquire with the original factory or its agents about the latest production status and technical information about NE160QDM-NZ1. The product parameters displayed on zylcdshop.com are entered by zylcdshop.com engineers according to the specifications, and efforts have been made to minimize errors, but we cannot guarantee the complete correctness of the parameters. Please refer to the specification sheet!

<https://www.zylcdshop.com>



<https://www.zylcdshop.com>

<https://www.zylcdshop.com>



<https://www.zylcdshop.com>