

LT104AC54000 Toshiba 10.4 inch LTPS TFT-LCD LCM 640(RGB)×480 VGA

| | |
|------------------|----------------------------------|
| Model | LT104AC54000 |
| Brand | Toshiba |
| Category | TOSHIBA |
| Size | 10.4" |
| Resolution | 640(RGB)×480, VGA |
| Brightness | - |
| Contrast Ratio | 500:1 (Typ.) (TM) |
| Viewing Angle | - |
| Lamp Type | CCFL [2 pcs] |
| Signal Interface | CMOS(1ch,6-bit) |
| Panel Type | LTPS TFT-LCD, LCM |
| Mass | 1.500Kg |
| Pixel Format | RGB Vertical Stripe |
| Active Area | - |
| Bezel Opening | - |
| Outline size | - |
| Surface | - |
| Response Time | - |
| Best View on | - |
| Work Mode | TN, Normally White, Transmissive |
| Display Colors | 262K |
| Weight | - |

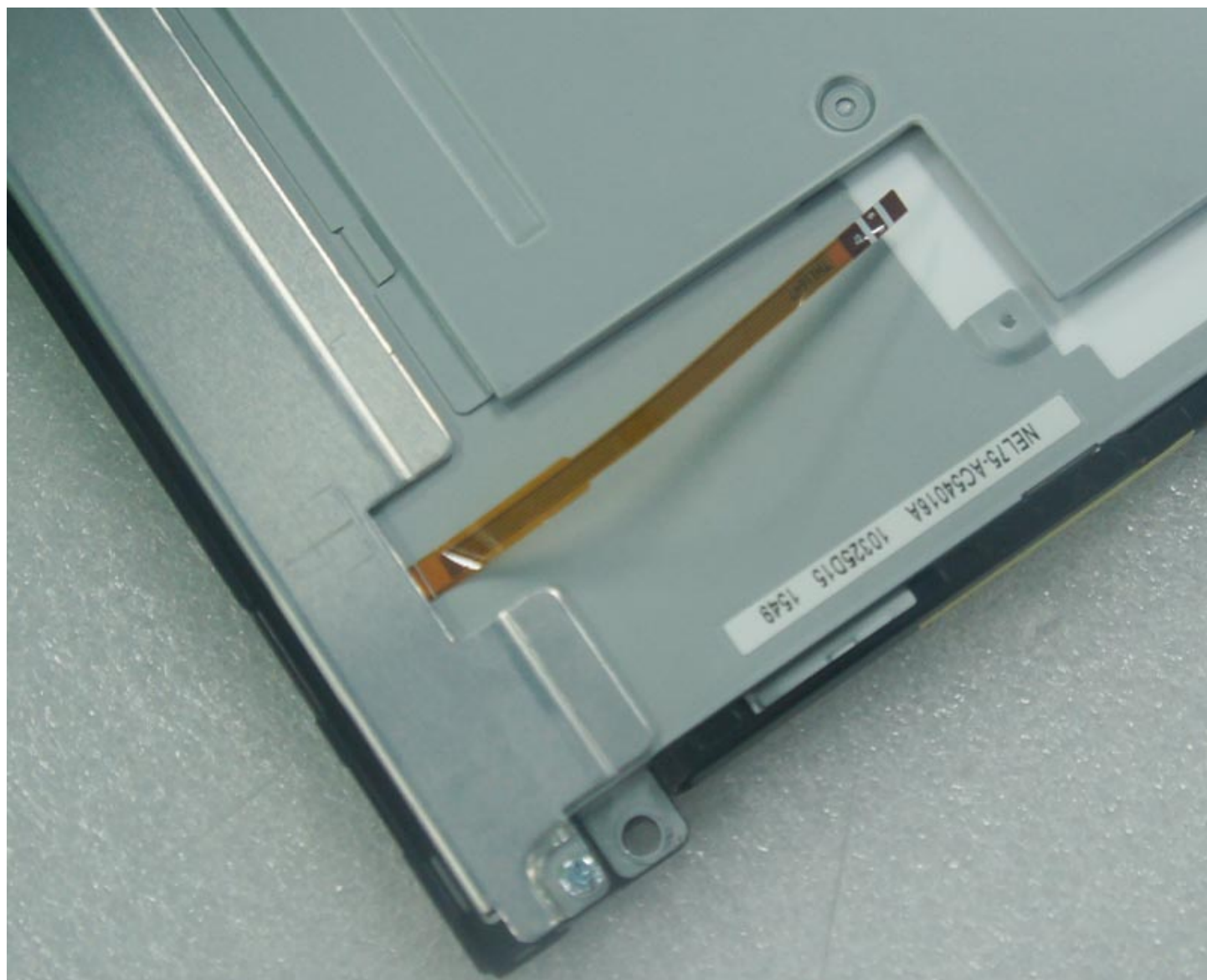
| | |
|----------------|-----------------|
| Frequency | - |
| Touchscreen | - |
| Signal Type | CMOS(1ch,6-bit) |
| Voltage Supply | 262K |

Note:

zylcdshop.com recommends that you inquire with the original factory or its agents about the latest production status and technical information about LT104AC54000. The product parameters displayed on zylcdshop.com are entered by zylcdshop.com engineers according to the specifications, and efforts have been made to minimize errors, but we cannot guarantee the complete correctness of the parameters. Please refer to the specification sheet!

<https://www.zylcdshop.com>

<https://www.zylcdshop.com>



<https://www.zylcdshop.com>