

# LQ104S1DG35 Sharp 10.4 inch800\*600 Industrial panel lcd

|                  |                              |
|------------------|------------------------------|
| Model            | LQ104S1DG35                  |
| Brand            | SHARP                        |
| Category         | <a href="#">SHARP</a>        |
| Size             | 10.4"                        |
| Resolution       | 800*600                      |
| Contrast Ratio   | 300:1                        |
| Viewing Angle    | 70/70/50/60                  |
| Lamp Type        | WLED                         |
| Signal Interface | CMOS (1 ch, 6-bit) Connector |
| Panel Type       | a-Si TFT-LCD, LCM            |
| Mass             | 1.000Kg                      |
| Frame Rate       | 60                           |
| Outline          | 211.2x158.4                  |

Note:

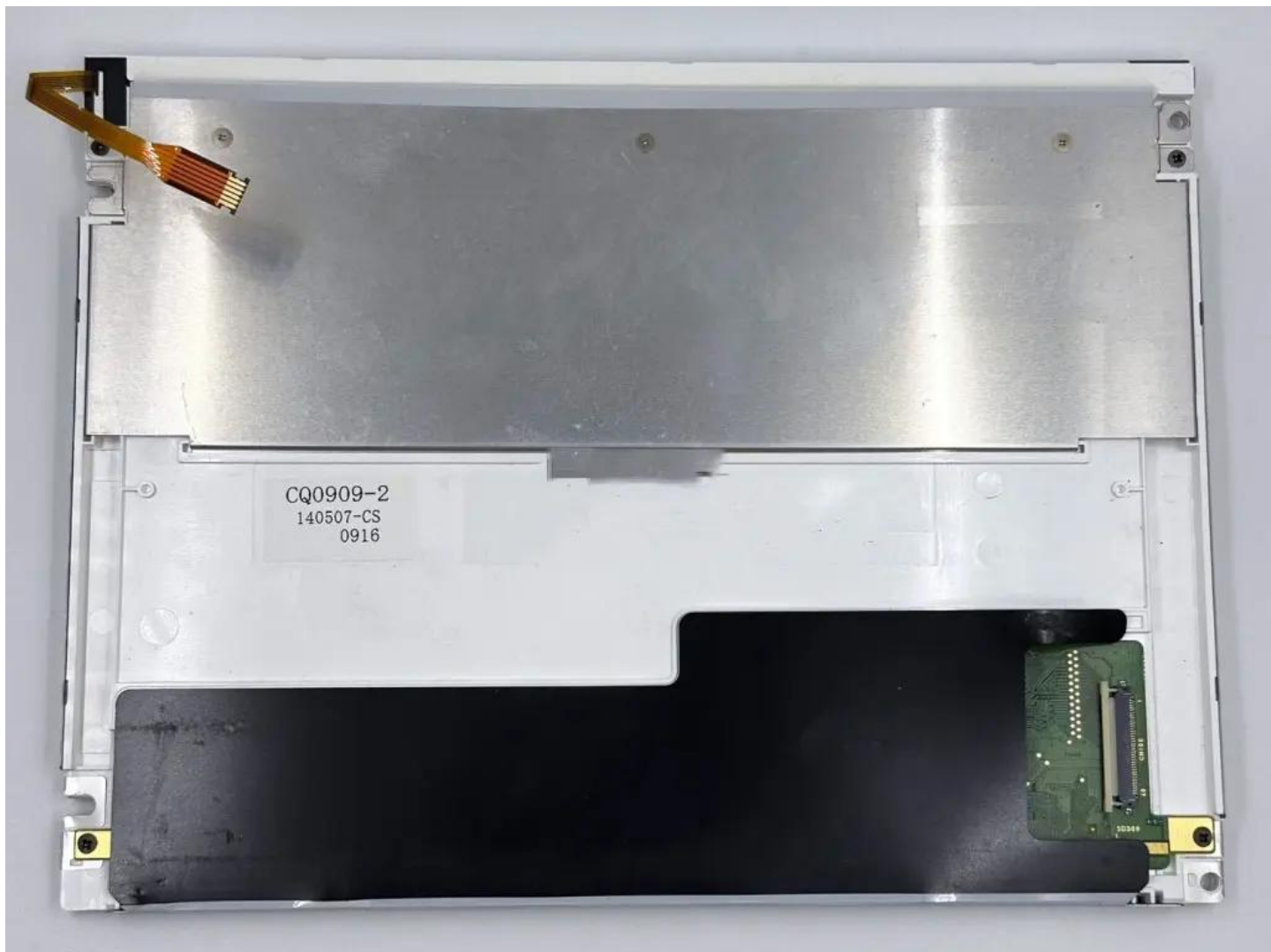
zylcdshop.com recommends that you inquire with the original factory or its agents about the latest production status and technical information about LQ104S1DG35. The product parameters displayed on zylcdshop.com are entered by zylcdshop.com engineers according to the specifications, and efforts have been made to minimize errors, but we cannot guarantee the complete correctness of the parameters. Please refer to the specification sheet!

<https://www.zylcdshop.com>



<https://www.zylcdshop.com>

<https://www.zylcdshop.com>



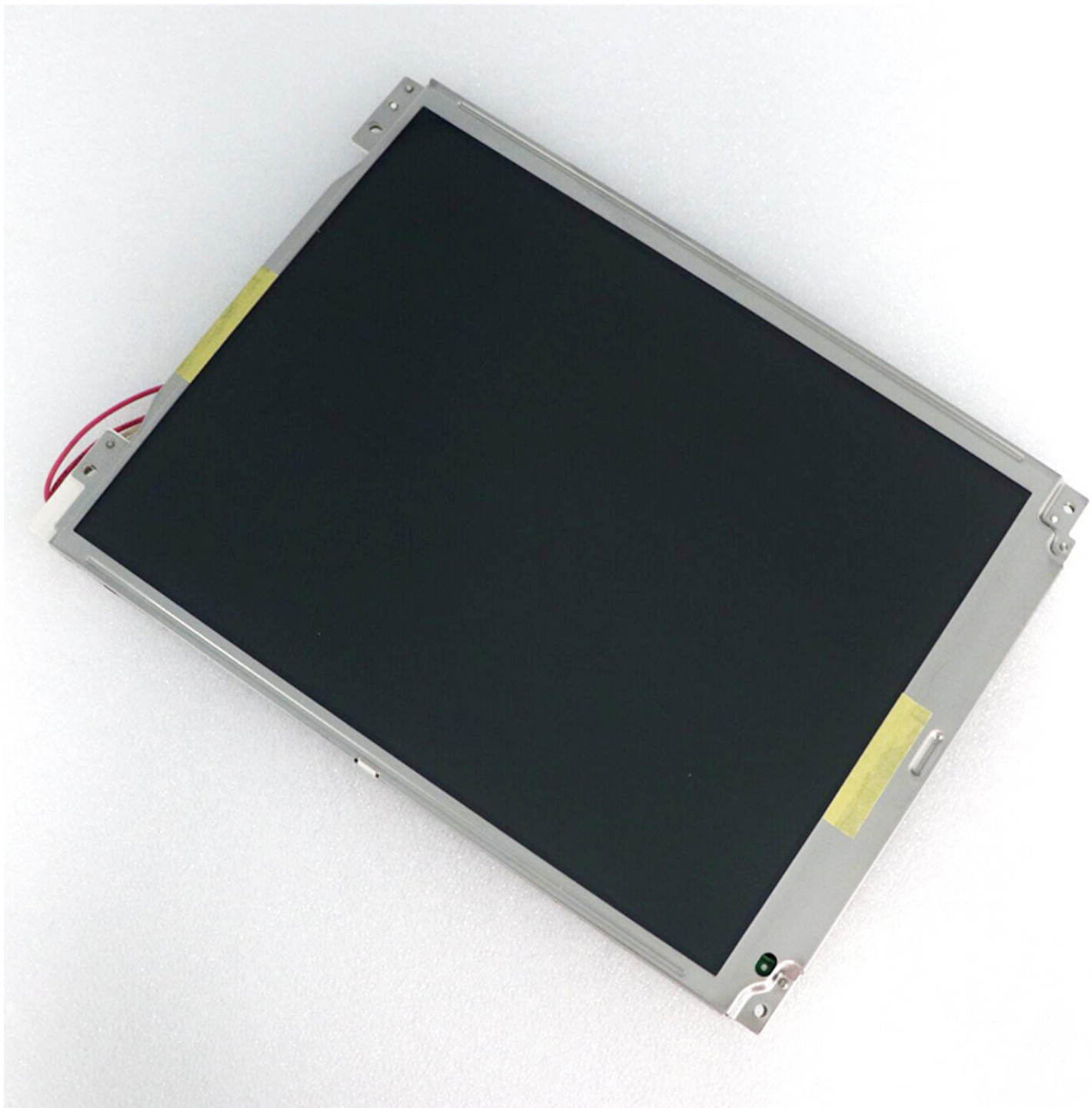
<https://www.zylcdshop.com>

<https://www.zylcdshop.com>



<https://www.zylcdshop.com>

<https://www.zylcdshop.com>



<https://www.zylcdshop.com>