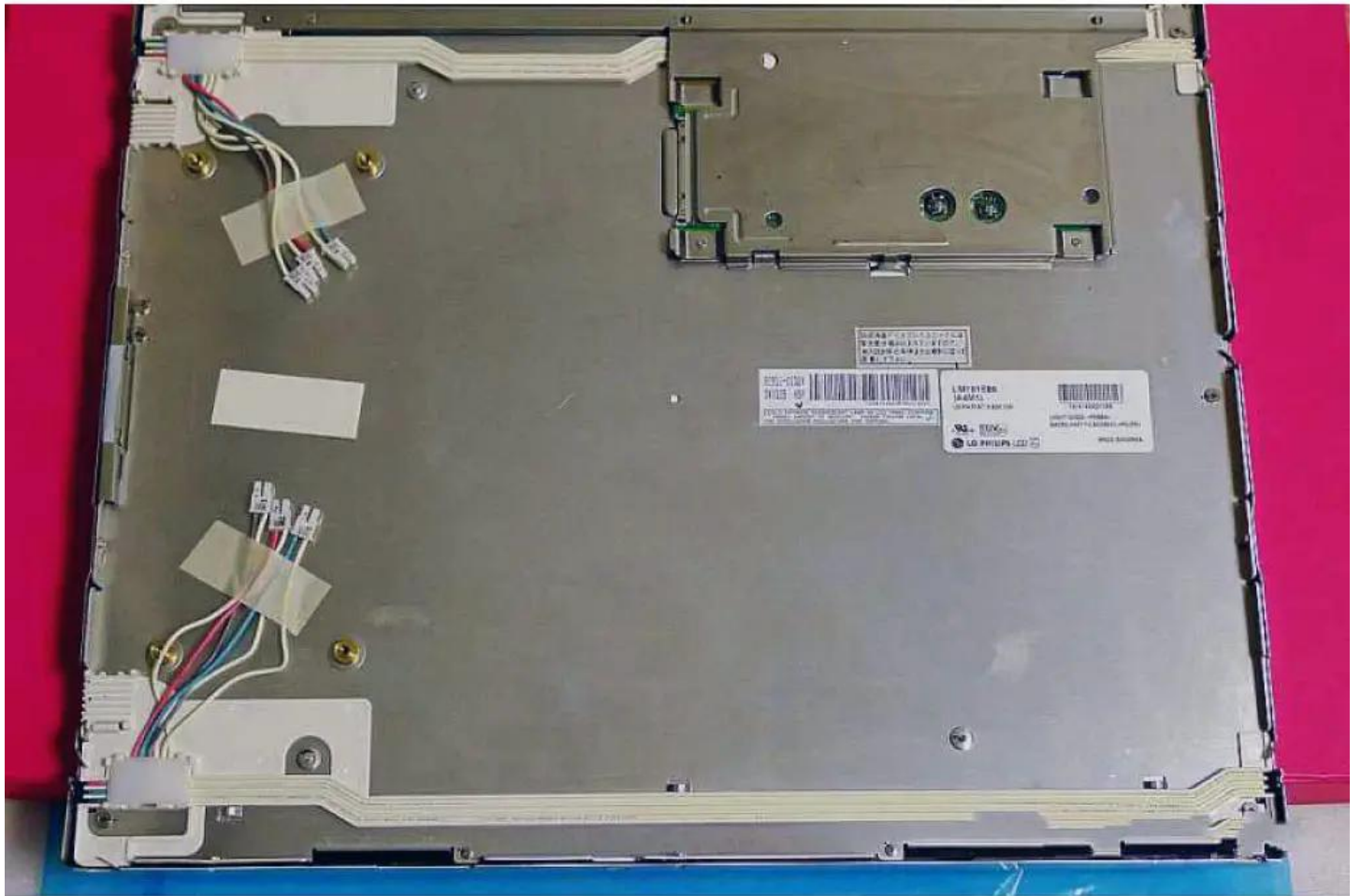


# LG.Philips LCD LM181E06-A4M1 18.1 Inch High-Performance TFT-LCD Panel Module

Model	LM181E06-A4M1
Brand	LG
Category	<a href="#">LG</a>
Resolution	1280(RGB)×1024, SXGA, 5:4
Brightness	250 cd/m <sup>2</sup> (Typ.)
Contrast Ratio	350:1 (Typ.) (TM)
Viewing Angle	80/80/80/80 (Typ.)(CR?10)
Lamp Type	6 pcs CCFL, 40K hrs, Without Driver
Signal Interface	LVDS (2 ch, 8-bit), 30 pins Connector
Panel Type	a-Si TFT-LCD, LCM
Mass	3Kg
Frame Rate	60Hz
Active Area	359.04(H)×287.232(V) mm
Outline	389(H)×317.2(V)×27.5(D) mm
Storage Temp	-20 ~ 60 °C
Operating Temp	0 ~ 50 °C
Support Color	16.7M, 67% NTSC

## Note:

zylcdshop.com recommends that you inquire with the original factory or its agents about the latest production status and technical information about LM181E06-A4M1. The product parameters displayed on zylcdshop.com are entered by zylcdshop.com engineers according to the specifications, and efforts have been made to minimize errors, but we cannot guarantee the complete correctness of the parameters. Please refer to the specification sheet!



<https://www.zylcdshop.com>



<https://www.zylcdshop.com>