

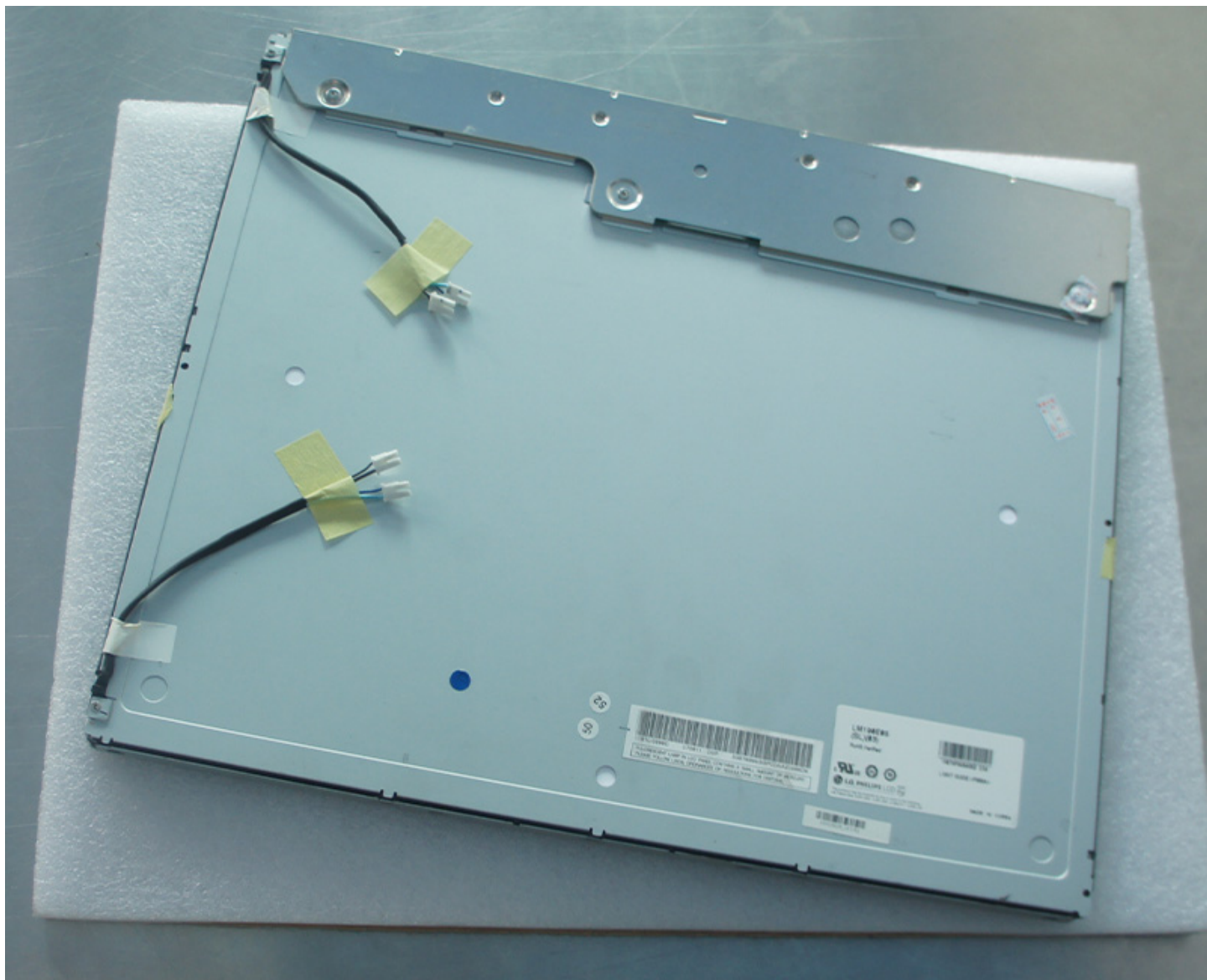
LG Display LM190E0C-SLA1 19" Industrial LCD Display Panel 1280x1024 LVDS

Model	LM190E0C-SLA1
Brand	LG
Category	LG
Resolution	1280x1024
Brightness	250 cd/m ²
Contrast Ratio	1000:1
Viewing Angle	89/89/89/89
Lamp Type	WLED
Signal Interface	LVDS
Panel Type	LCM
Mass	3Kg
Support Color	16.7M

Note:

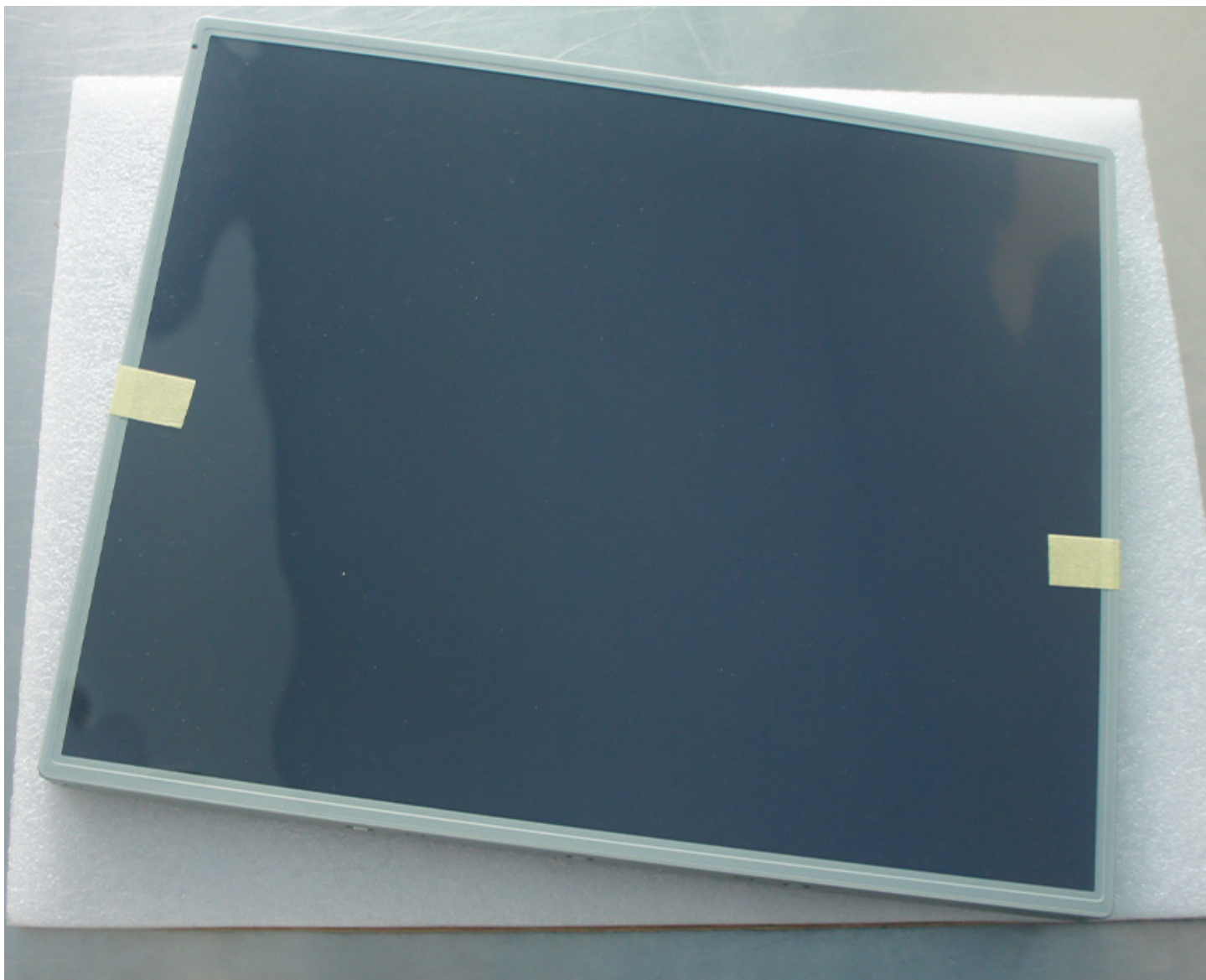
zylcdshop.com recommends that you inquire with the original factory or its agents about the latest production status and technical information about LM190E0C-SLA1. The product parameters displayed on zylcdshop.com are entered by zylcdshop.com engineers according to the specifications, and efforts have been made to minimize errors, but we cannot guarantee the complete correctness of the parameters. Please refer to the specification sheet!

<https://www.zylcdshop.com>



<https://www.zylcdshop.com>

<https://www.zylcdshop.com>



<https://www.zylcdshop.com>