

# Kyocera KCG057QV1EA-G010 5.7" Industrial LCD Display Panel 640x480 TTL RGB

Model	KCG057QV1EA-G010
Brand	KYOCERA
Category	<a href="#">Kyocera</a>
Size	5.7"
Resolution	640x480
Brightness	400 cd/m <sup>2</sup> (ref)
Contrast Ratio	150:1 (ref)
Viewing Angle	45/45/20/40 (ref)
Lamp Type	LED (ref)
Signal Interface	TTL RGB
Panel Type	LCM
Mass	0.5Kg
Support Color	262K (ref)

## Note:

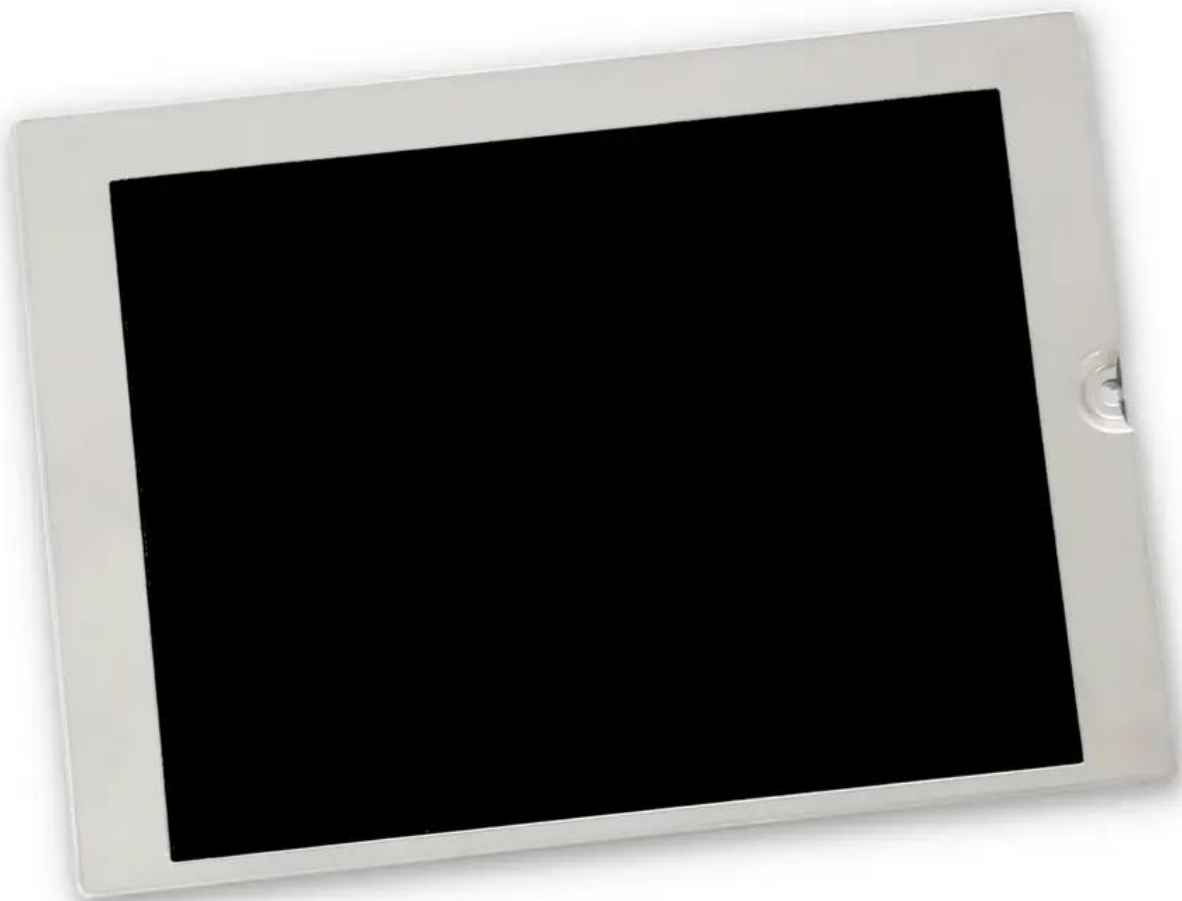
zylcdshop.com recommends that you inquire with the original factory or its agents about the latest production status and technical information about KCG057QV1EA-G010. The product parameters displayed on zylcdshop.com are entered by zylcdshop.com engineers according to the specifications, and efforts have been made to minimize errors, but we cannot guarantee the complete correctness of the parameters. Please refer to the specification sheet!

<https://www.zylcdshop.com>



<https://www.zylcdshop.com>

<https://www.zylcdshop.com>



<https://www.zylcdshop.com>