

khs072vg1ab-g00 7.2 inch lcd display screens for Kyocera

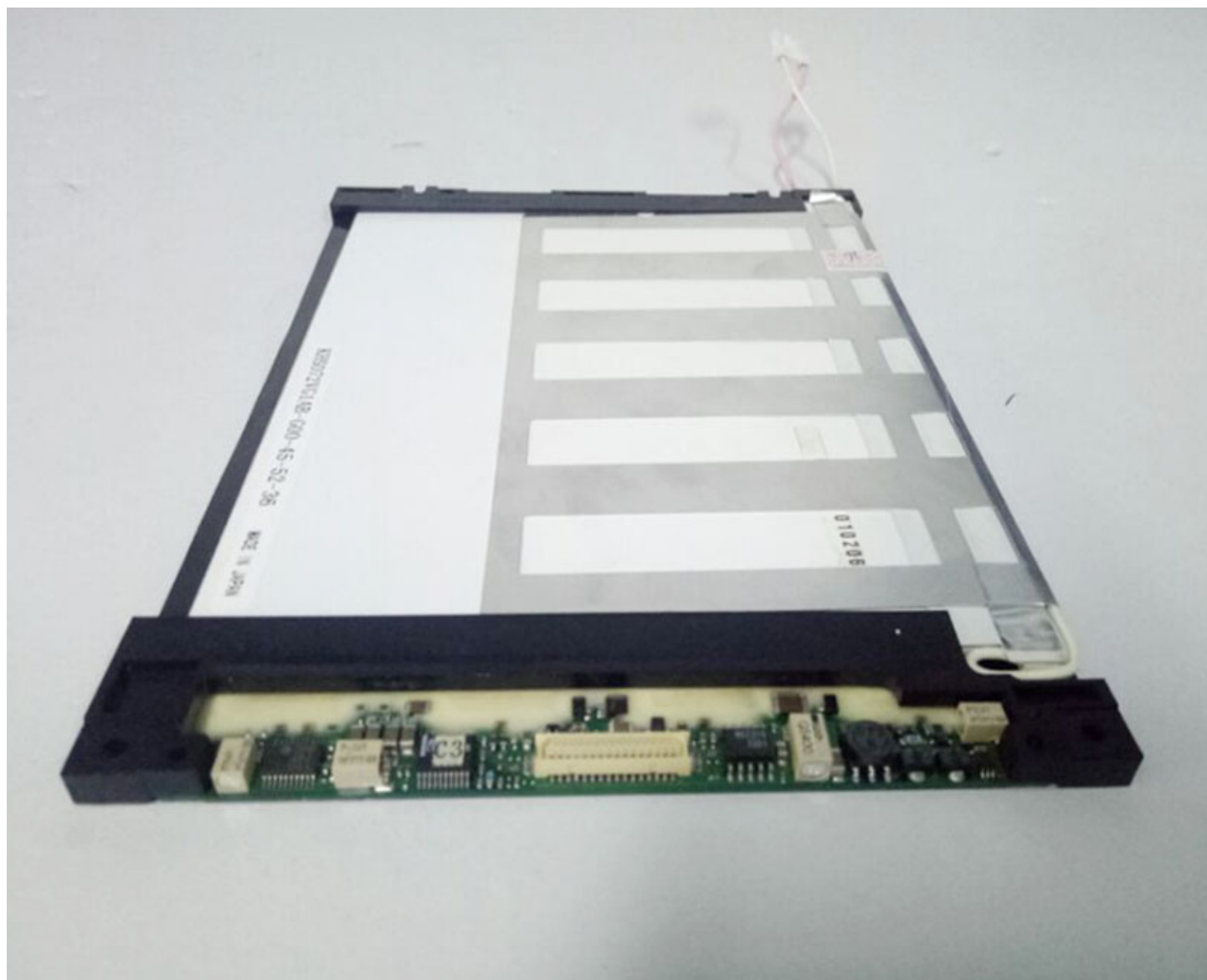
Model	khs072vg1ab-g00
Brand	KYOCERA
Category	Kyocera
Size	7.2"
Resolution	640(RGB)×480, VGA 111PPI
Brightness	30 cd/m ² (Typ.)
Contrast Ratio	25:1 (Typ.) (TM) 9:1 (Typ.) (RF)
Viewing Angle	50/50/40/30 (Typ.)(CR?2)
Lamp Type	1 pcs CCFL , 40K hours , Optional
Signal Interface	Parallel Data (1ch, 8-bit) , 31 pins Connector
Panel Type	a-Si TFT-LCD, LCM
Mass	1.000Kg

Note:

zylcdshop.com recommends that you inquire with the original factory or its agents about the latest production status and technical information about khs072vg1ab-g00. The product parameters displayed on zylcdshop.com are entered by zylcdshop.com engineers according to the specifications, and efforts have been made to minimize errors, but we cannot guarantee the complete correctness of the parameters. Please refer to the specification sheet!



<https://www.zylcdshop.com>



<https://www.zylcdshop.com>