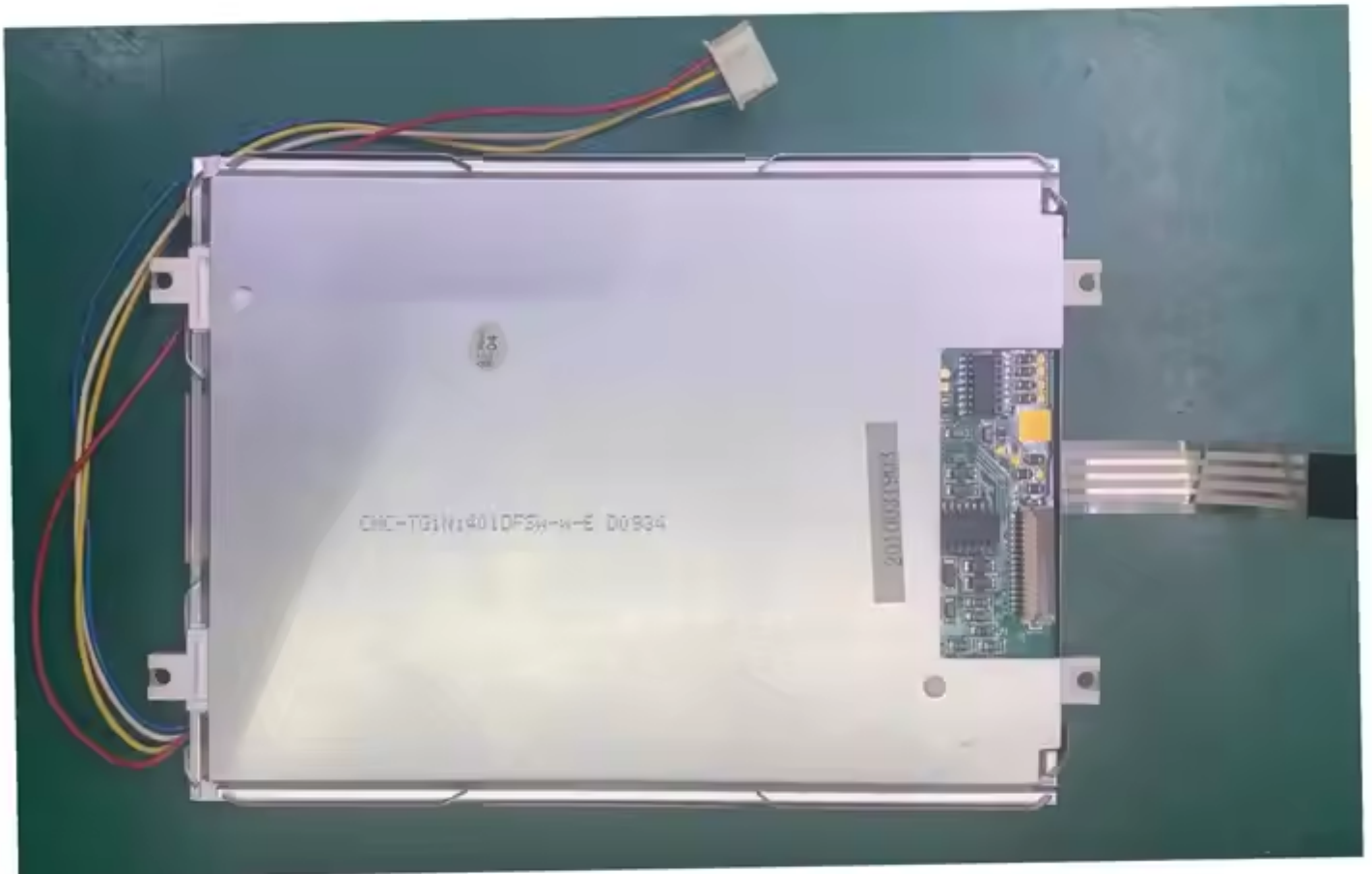


G320240DTSW TRULY 3.5 inch 320*240 lcd display screens

Model	G320240DTSW
Category	Other LCD display
Size	3.5"
Resolution	320(RGB)x240, QVGA 115PPI
Brightness	270 cd/m ² (Typ.)
Contrast Ratio	320:1 (Typ.) (TM)
Viewing Angle	80/80/51/80 (Typ.)(CR?10)
Lamp Type	6S1P WLED , 30K hours , Without Driver
Signal Interface	Parallel RGB (1 ch, 6-bit) + SPI , 60 pins FPC
Panel Type	a-Si TFT-LCD, LCM
Mass	1.000Kg
Frame Rate	60Hz
Active Area	70.08x52.56 mm (HxV)
Outline	77x64x4.8 mm (HxVxD)
Storage Temp	-30 ~ 80 °C
Operating Temp	-20 ~ 70 °C
Support Color	262K

Note:

zylcdshop.com recommends that you inquire with the original factory or its agents about the latest production status and technical information about G320240DTSW. The product parameters displayed on zylcdshop.com are entered by zylcdshop.com engineers according to the specifications, and efforts have been made to minimize errors, but we cannot guarantee the complete correctness of the parameters. Please refer to the specification sheet!



<https://www.zylcdshop.com>



<https://www.zylcdshop.com>