

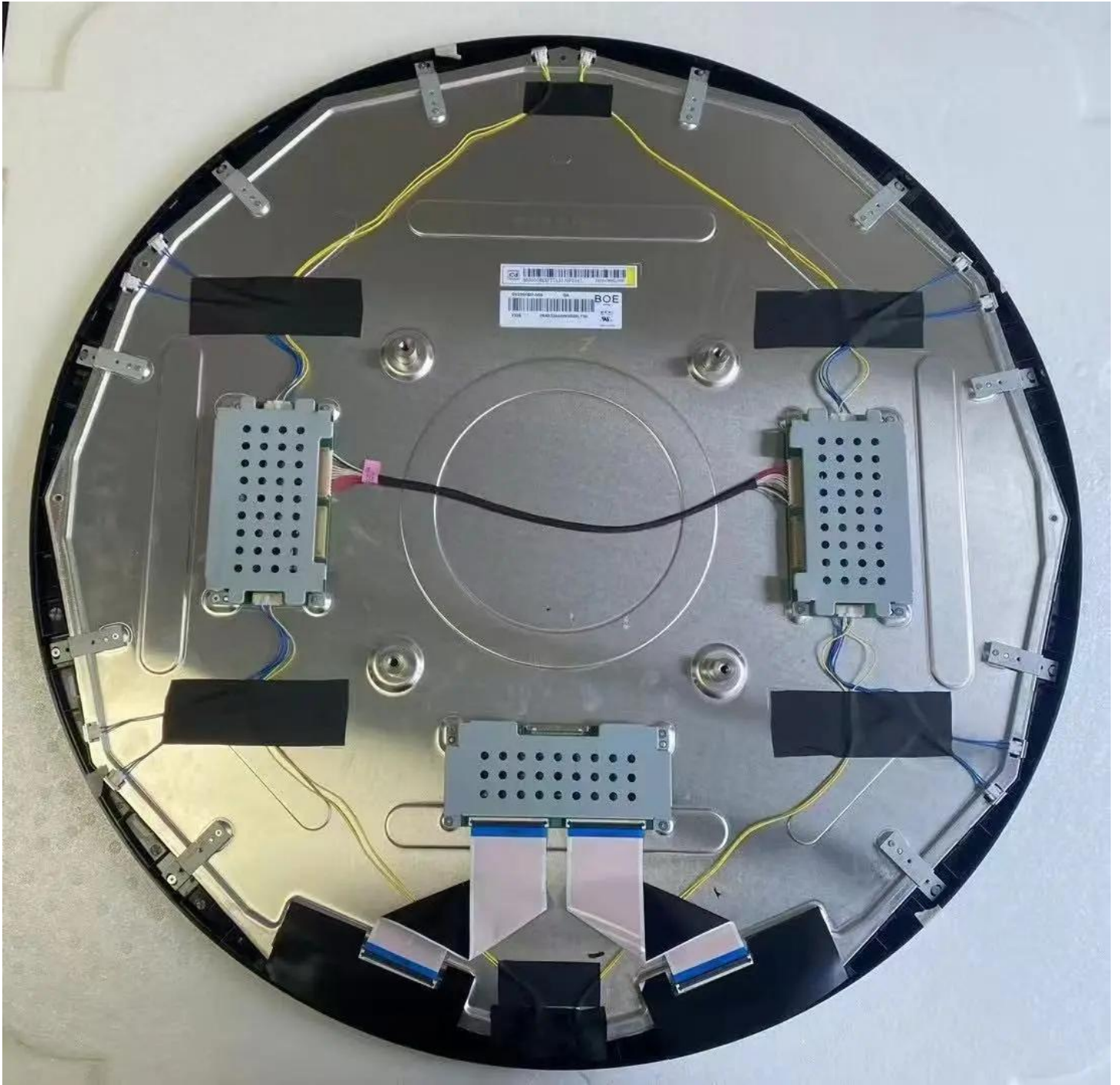
DV236FBM-N00 BOE 23.6 inch lcd display module

Model	DV236FBM-N00
Brand	BOE
Category	BOE
Size	23.6"
Resolution	1280(RGB)×1280 54PPI
Brightness	1500
Contrast Ratio	1000:1
Viewing Angle	89/89/89/89
Lamp Type	WLED
Signal Interface	30 pins
Panel Type	a-Si TFT-LCD, LCM
Mass	6Kg
Frame Rate	60
Active Area	599.424×599.424
Outline	657×657×29.15
Storage Temp	-20 ~ 60 °C
Operating Temp	0 ~ 50 °C
Support Color	16.7M 72% NTSC

Note:

zylcdshop.com recommends that you inquire with the original factory or its agents about the latest production status and technical information about DV236FBM-N00. The product parameters displayed on zylcdshop.com are entered by zylcdshop.com engineers according to the specifications, and efforts have been made to minimize errors, but we cannot guarantee the complete correctness of the parameters. Please refer to the specification sheet!





<https://www.zylcdshop.com>

BOE

FUZHOU BOE OPTOELECTRONICS
TECHNOLOGY Co.,LTD

MODEL: DV236FBM-N00

QTY: 5

SERIAL NO: P9AE266000KKC

DATE: 2025.08.13



AWK0

eco

RoHS Compliant

C_{UL} US

<https://www.zylcdshop.com>