

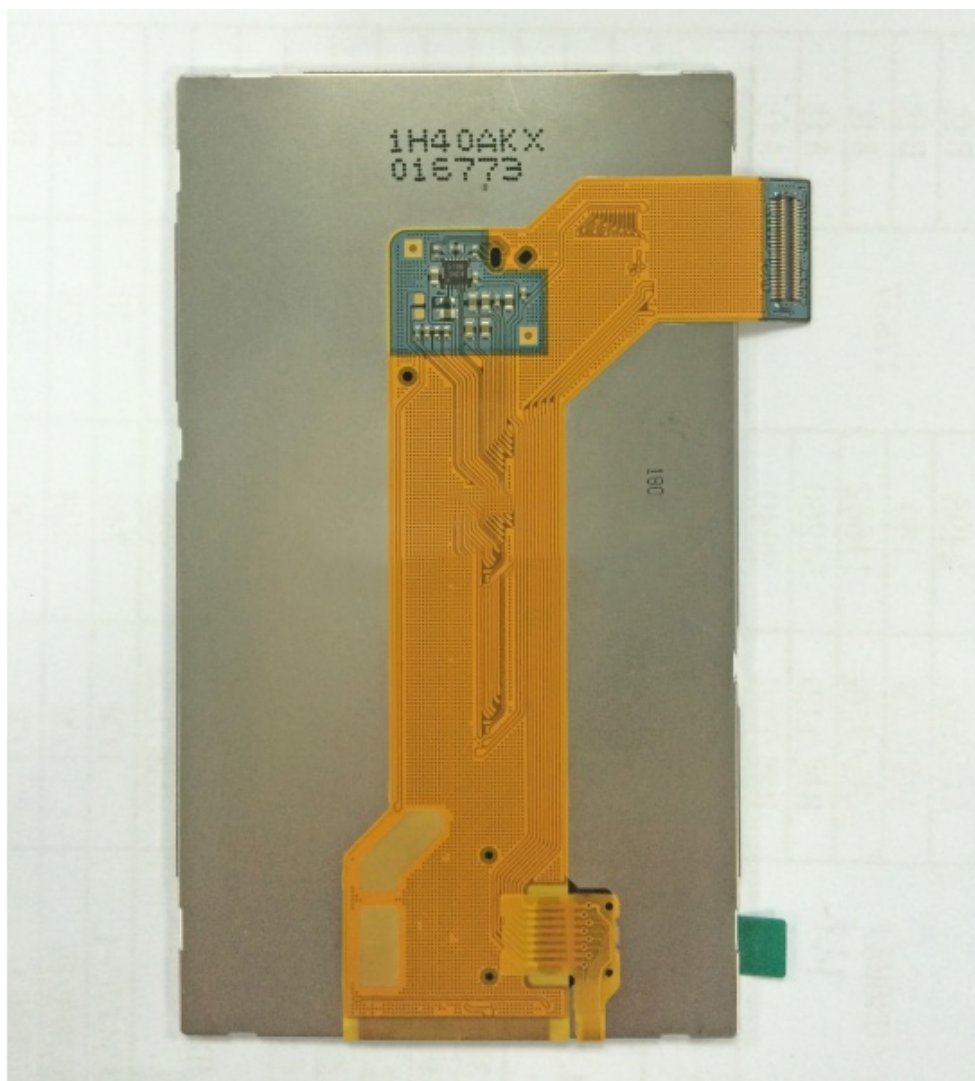
CSOT COM40H4N35ULC 4.3" Industrial LCD Display Panel 480×272 RGB

Model	COM40H4N35ULC
Category	CSOT
Size	4.3"
Resolution	480×272
Brightness	250 cd/m ² (ref)
Contrast Ratio	400:1 (ref)
Viewing Angle	60/60/40/60 (ref)
Lamp Type	LED (ref)
Signal Interface	RGB
Panel Type	LCM
Mass	0.5Kg
Support Color	65K/262K (ref)

Note:

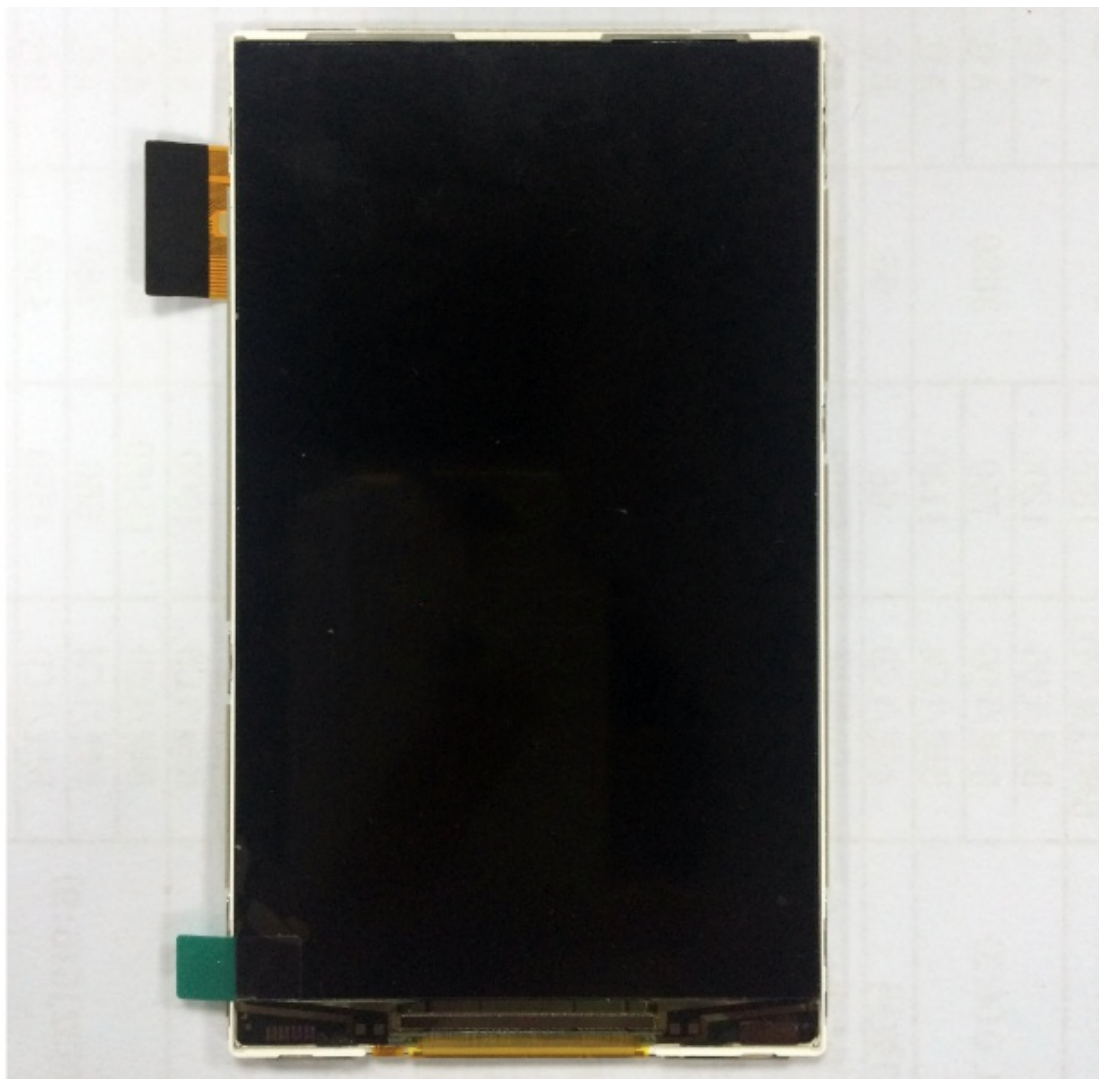
zylcdshop.com recommends that you inquire with the original factory or its agents about the latest production status and technical information about COM40H4N35ULC. The product parameters displayed on zylcdshop.com are entered by zylcdshop.com engineers according to the specifications, and efforts have been made to minimize errors, but we cannot guarantee the complete correctness of the parameters. Please refer to the specification sheet!

<https://www.zylcdshop.com>



<https://www.zylcdshop.com>

<https://www.zylcdshop.com>



<https://www.zylcdshop.com>