

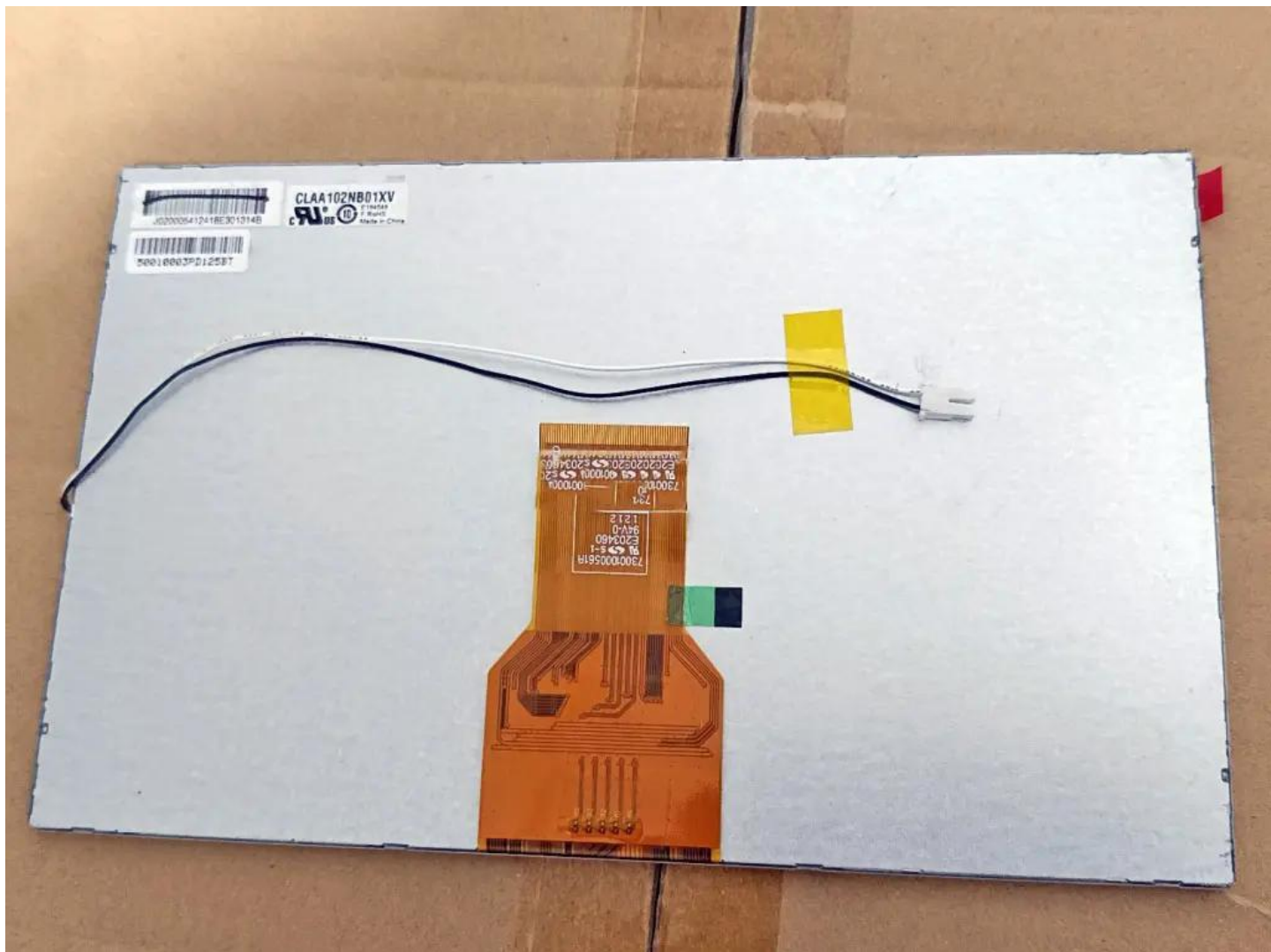
CPT CLAA102NB01XV 10.2" Industrial LCD Display Panel 1024x600 LVDS WLED

Model	CLAA102NB01XV
Category	CPT
Size	10.2"
Resolution	1024x600
Brightness	400 cd/m ²
Contrast Ratio	700:1
Viewing Angle	80/80/80/80
Lamp Type	WLED
Signal Interface	LVDS
Panel Type	LCM
Mass	1Kg
Support Color	262K/16.2M

Note:

zylcdshop.com recommends that you inquire with the original factory or its agents about the latest production status and technical information about CLAA102NB01XV. The product parameters displayed on zylcdshop.com are entered by zylcdshop.com engineers according to the specifications, and efforts have been made to minimize errors, but we cannot guarantee the complete correctness of the parameters. Please refer to the specification sheet!

<https://www.zylcdshop.com>



<https://www.zylcdshop.com>

<https://www.zylcdshop.com>



<https://www.zylcdshop.com>