

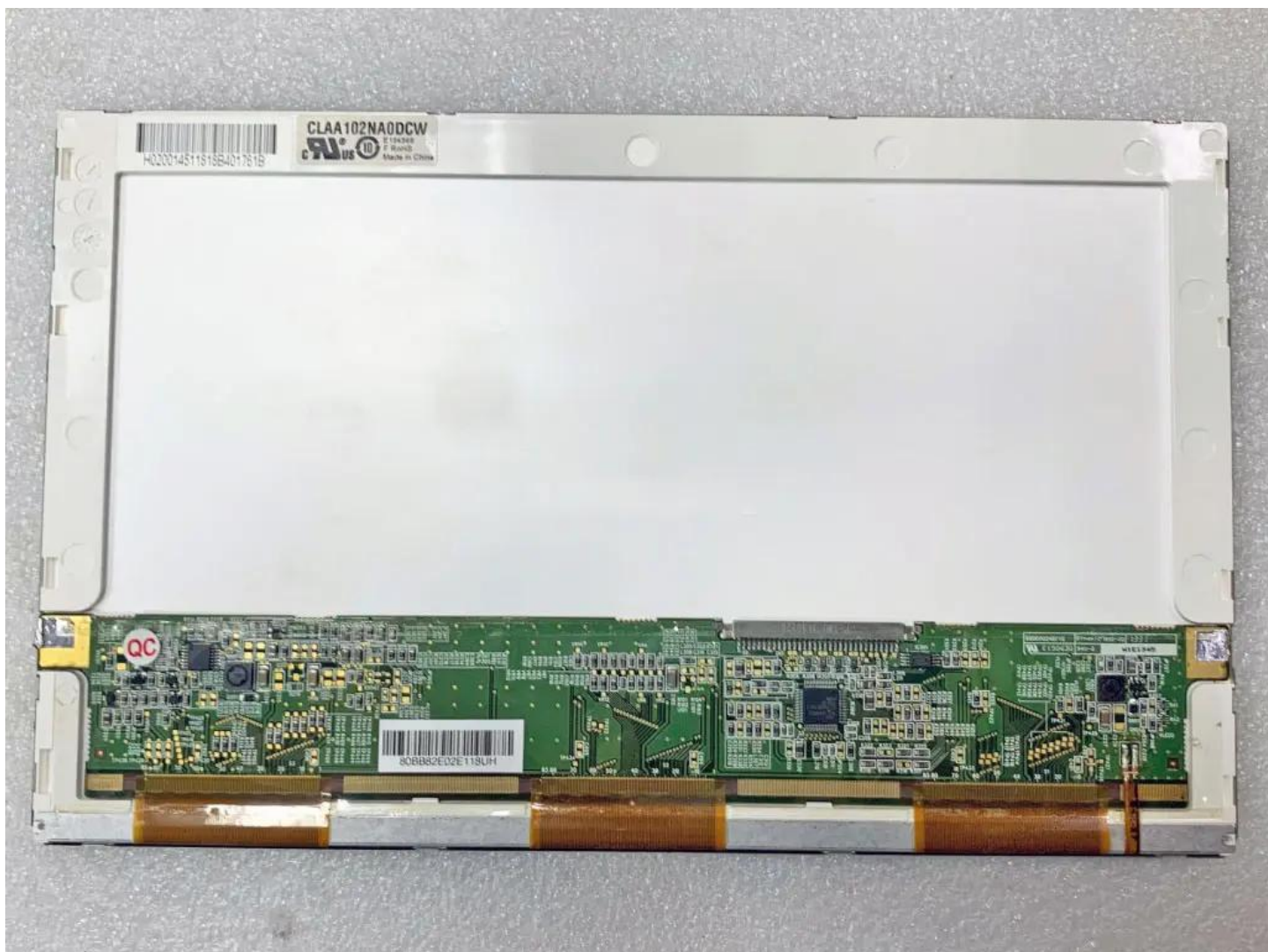
CPT CLAA102NA0DCW 10.2" Industrial LCD Display Panel 1024x600 LVDS WLED

Model	CLAA102NA0DCW
Category	CPT
Resolution	1024x600
Brightness	400 cd/m ²
Contrast Ratio	400:1
Viewing Angle	70/70/50/70
Lamp Type	WLED
Signal Interface	LVDS
Panel Type	LCM
Mass	1.000Kg
Support Color	262K

Note:

zylcdshop.com recommends that you inquire with the original factory or its agents about the latest production status and technical information about CLAA102NA0DCW. The product parameters displayed on zylcdshop.com are entered by zylcdshop.com engineers according to the specifications, and efforts have been made to minimize errors, but we cannot guarantee the complete correctness of the parameters. Please refer to the specification sheet!

<https://www.zylcdshop.com>



<https://www.zylcdshop.com>

<https://www.zylcdshop.com>



<https://www.zylcdshop.com>