

# b160uan01.k AUO 16 inch 1920\*1200 lcd display panel

Model	b160uan01.k
Brand	AUO
Category	<a href="#">AUO</a>
Size	16"
Resolution	1920(RGB)×1200, WUXGA 141PPI
Brightness	400 cd/m <sup>2</sup> (Typ.)
Contrast Ratio	1000:1 (Typ.) (TM)
Viewing Angle	89/89/89/89 (Typ.)(CR?10
Lamp Type	WLED , 15K hours , With LED Driver
Signal Interface	eDP (2 Lanes) , eDP1.4 , 30 pins Connector
Panel Type	LTPS TFT-LCD, LCM
Mass	3.000Kg
Frame Rate	60Hz
Active Area	344.678(W)×215.424(H) mm
Outline	349.678(W)×224.524(H)×2.6(D) mm
Storage Temp	-20 ~ 60 °C
Operating Temp	0 ~ 50 °C
Support Color	16.7M, Low Blue Light

## Note:

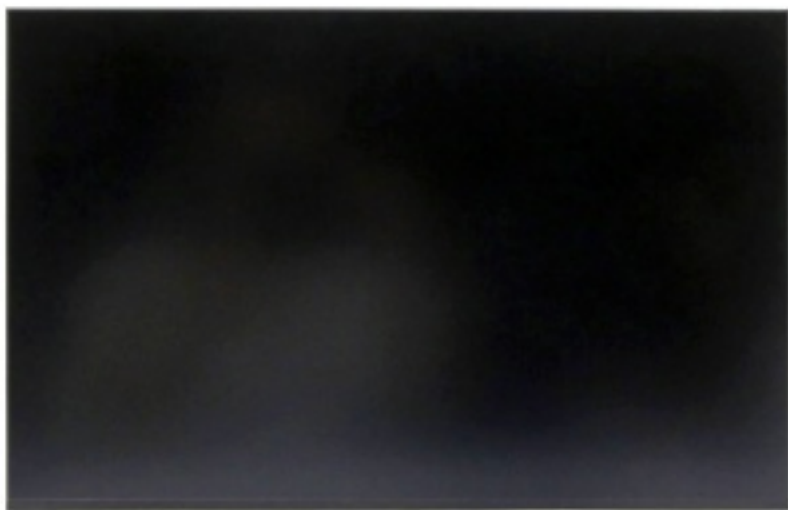
zylcdshop.com recommends that you inquire with the original factory or its agents about the latest production status and technical information about b160uan01.k. The product parameters displayed on zylcdshop.com are entered by zylcdshop.com engineers according to the specifications, and efforts have been made to minimize errors, but we cannot guarantee the complete correctness of the parameters. Please refer to the specification sheet!

<https://www.zylcdshop.com>



<https://www.zylcdshop.com>

<https://www.zylcdshop.com>



<https://www.zylcdshop.com>