

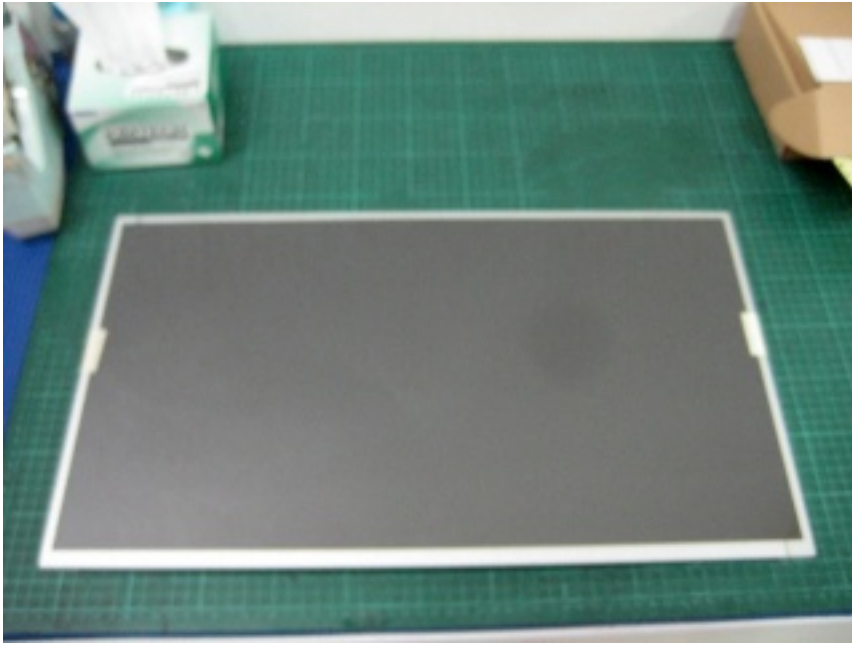
AUO M238HVN01.0 Full HD 23.8-Inch TFT-LCD Panel 1920×1080 Display Module

Model	M238HVN01.0
Brand	AUO
Category	AUO
Size	23.8"
Resolution	1920(RGB)×1080, 16:9, FHD
Brightness	250 cd/m ² (Typ.)
Contrast Ratio	3000:1 (Typ.) (TM)
Viewing Angle	89/89/89/89 (Typ.)(CR?10)
Signal Interface	LVDS (2 ch, 8-bit), 30 pins Connector
Panel Type	a-Si TFT-LCD, LCM
Mass	2.281Kg
Active Area	527.04x296.46 mm (HxV)
Storage Temp	-20 ~ 60 °C
Operating Temp	0 ~ 50 °C

Note:

zylcdshop.com recommends that you inquire with the original factory or its agents about the latest production status and technical information about M238HVN01.0. The product parameters displayed on zylcdshop.com are entered by zylcdshop.com engineers according to the specifications, and efforts have been made to minimize errors, but we cannot guarantee the complete correctness of the parameters. Please refer to the specification sheet!

<https://www.zylcdshop.com>



<https://www.zylcdshop.com>

<https://www.zylcdshop.com>



<https://www.zylcdshop.com>